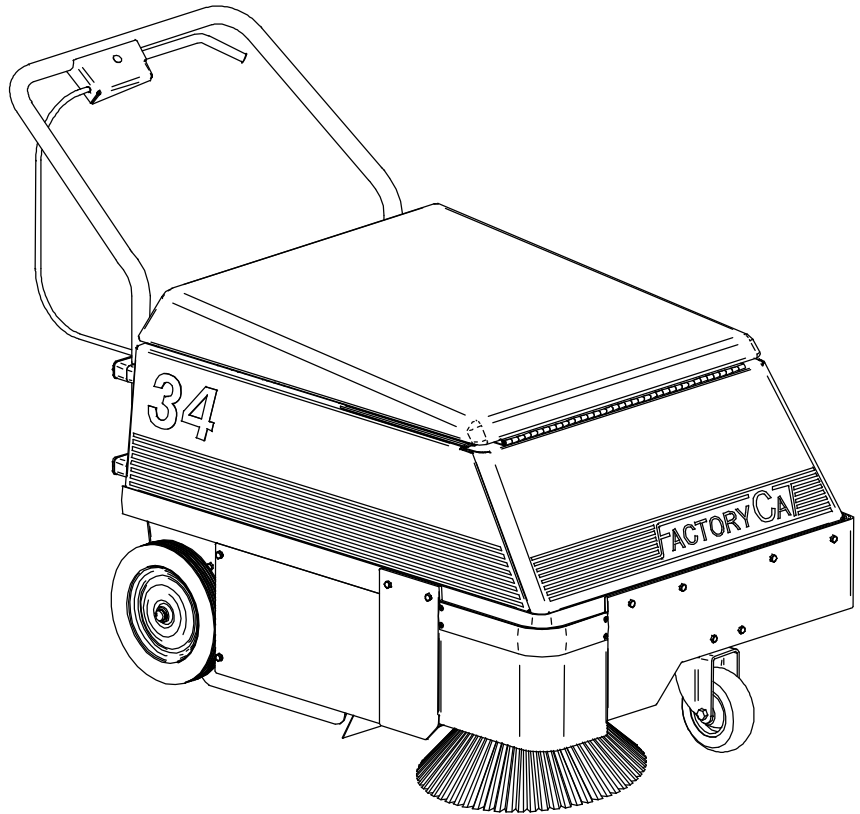


# Operator, Parts, & Service Manual



## *Model 34 Industrial Sweeper*

R.P.S. Corporation  
P.O. Box 368  
Racine, Wisconsin 53401

Phone: 1-800-634-4060  
Fax: 1-866-632-6961

[www.factorycat.com](http://www.factorycat.com)

Copyright R.P.S. Corporation 2002  
Edition 7, World Rights Reserved.



# SAFETY WARNINGS!

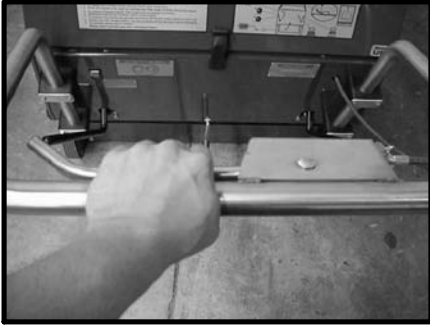
---

---

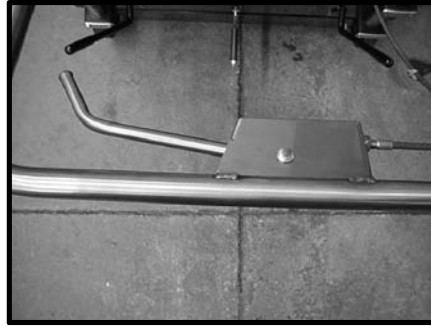
1. **READ THIS MANUAL CAREFULLY BEFORE OPERATING, ADJUSTING OR REPAIRING THIS MACHINE.**
2. **CHARGING THE BATTERY WILL PRODUCE EXPLOSIVE HYDROGEN GAS.**  
Do not smoke or allow an open flame near a charging battery. Do not charge battery with the hood (lid) of the machine closed or hydrogen gas may accumulate within.
3. **DRESS SAFELY.**  
Do not wear rings or metal wrist watches while working on this machine. They can cause an electrical short, which, in turn, can cause burns.  
  
Do not work on this machine while wearing a tie, scarf or other dangling neckwear. These can tangle in the rotating brooms, belts, and pulleys and cause serious injury or even death.
4. **OPERATE THE SAFETY SWITCH MANUALLY ONLY FOR REPAIR AND MAINTENANCE PROCEDURES AS OUTLINED IN THIS BOOK.**  
  
This safety switch stops the motors whenever the hood (lid) is raised.
5. **DO NOT USE THIS MACHINE AS A STEP LADDER OR CHAIR.**
6. **MACHINE IS HEAVY. DO NOT LIFT IT UNAIDED. DO NOT USE HANDLEBAR AS LIFTING POINT.**
7. **DO NOT WORK ON UNDERSIDE OF MACHINE WITHOUT PROPERLY SUPPORTING UNIT.**
8. **MAKE SURE HOOD (LID) IS SECURED IF YOU WORK UNDER IT AROUND OTHER PEOPLE.**  
  
Another person may accidentally bump the lid in its over-center position, causing it to come down on you while you work beneath it.
9. **IF YOU PLAN TO LEAVE YOUR MACHINE FOR EVEN A MINUTE, TURN OFF THE MAIN POWER SWITCH AND SET THE PARKING BRAKE.**



# SHORT LIST OF DO'S AND DON'TS



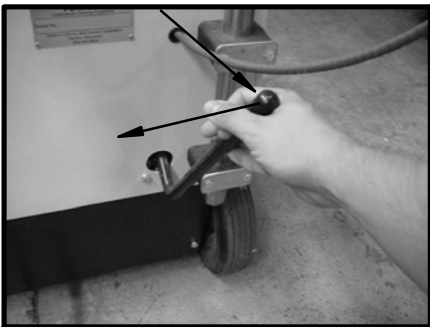
**1. TO GO:** Pull on the clutch lever gently, to propel the machine forward. Pull harder to go faster



**2. TO STOP:** Let go of the clutch lever to roll to a stop. Push down and forward on the lever to set the brake.



**3. TO SWEEP:** The main broom has to be on the floor. Use left-hand lever to lower it. Pull lever back, then to right



**4. TO SWEEP:** The side broom has to be on the floor. Use right-hand lever to lower it. Pull lever back, then to left.



Single switch, controls main broom and side broom. On two switch models, use right hand switch for side broom.

**5. DON'T RUN BATTERY ALL THE WAY DOWN!!** The machine will begin to slow and a red light will come on when battery is about to go dead. When this happens, stop sweeping immediately, and go back to base to recharge. If battery runs down too low, the automatic on-board charger will not pick it up again unless you run the charge through two charge cycles.



**6. TO RECHARGE:** Open the hood and plug in charger. A green light will turn on, when light turns off, battery is fully charged.

**7. BATTERY NEEDS WATER.** Check battery water every two weeks. Fill half-way to ring with distilled water. Do not overfill. Do not let acid spill on battery or on machine. If it does, flush with water, and sprinkle with baking soda on the spill.



**8. KEEP CRANK VERTICAL:** Before emptying hopper, turn crank fast 10 times. Crank must be vertical to open the hopper.

# SHORT LIST OF DO'S AND DON'TS



## 10. SIDE BROOM ADJUSTMENT.

Very Important. Your side broom must not be squashed flat, but must look like this.

**RIGHT!**

The broom must be mounted in the top hole of the broom shaft, and the adjusting screw must be screwed in so broom just touches the floor in front.



**WRONG!**

If adjusted too flat, your machine's side broom will shut itself off periodically to cool down the motor. You will sweep poorly and severely damage the side broom.



## 11. GOTTA SWEEP GREAT.

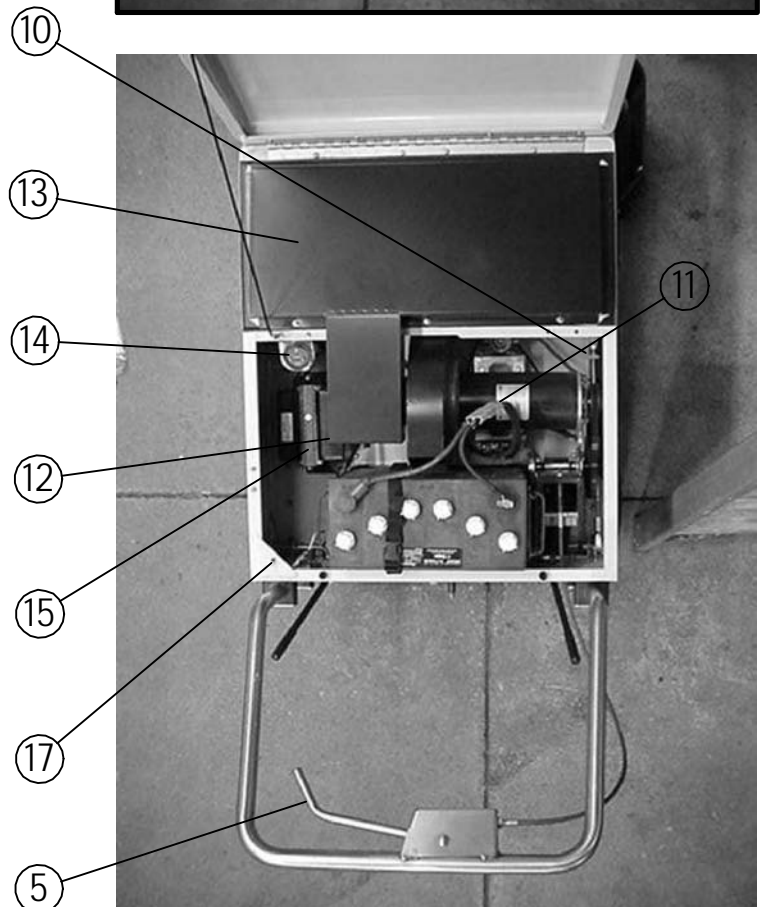
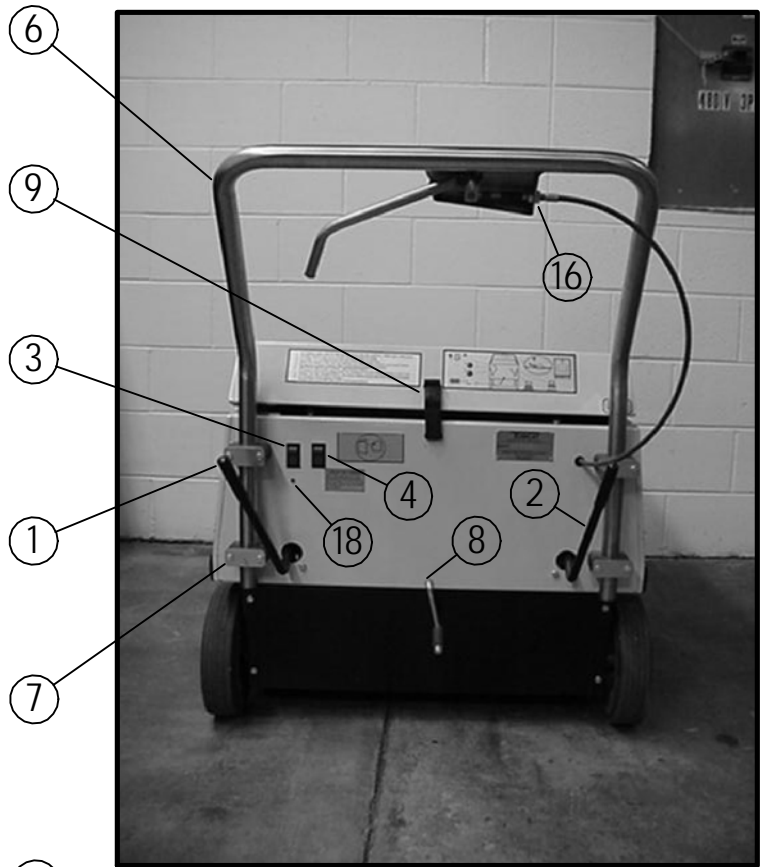
No kidding. This is the world's best walk-behind sweeper. If your sweeper isn't sweeping just great, seems hard to use, or is making funny noises.....Something is Wrong. Here is what to do:

1. Read this book.
2. Call your dealer for info or service.

If you forgot your dealer's name, call the Factory toll free 800-634-4060, and we will give you his name and phone number.

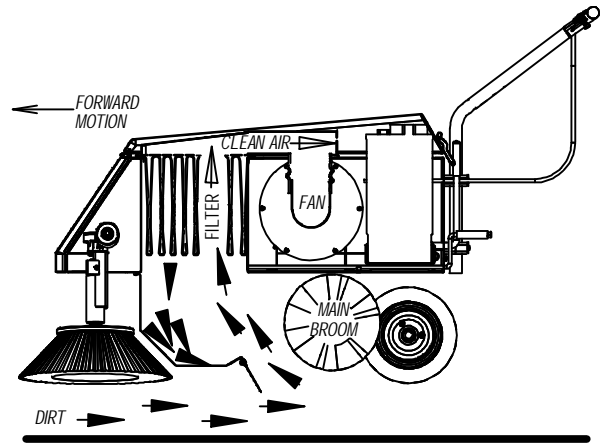
## **IDENTIFYING THE CONTROLS**

1. Main Broom Position Lever.
2. Side Broom Position Lever.
3. Main Power On/Off Switch.  
(On single switch machines, this switch has three positions, and can also turn on the side broom.)
4. Side Broom On/Off Switch.  
(Not found on single switch machines.)
5. Clutch and Brake Lever.
6. Adjustable Handlebar.
7. Handlebar Adjustment Clamps. (4)
8. Filter Shaker Crank.
9. Hood Latch.
10. Side Broom Adjustment Knob.
11. Battery Andersen Connector
12. Vacuum Bypass.
13. Dust Filter Access Plate.
14. Hour Meter (or optional Battery Condition Meter).
15. On-Board Electronic Battery Charger.
16. Clutch & Brake Cable Adjustment.
17. Safety Shut-Off Switch (operated by closing the hood).
18. Low Battery Light.



## **HOW IT WORKS**

1. Main Broom, which is tubular in shape, and extends across width of machine, rotates in direction shown, pushing dirt and debris into hopper.
2. Side broom (*when used*) picks up dirt in corners and pushes it toward the middle of the machine where the main broom picks it up.
3. The main broom creates dust. The automatic vacuum system sucks up this dust; then, the filter catches it.
4. The filter empties into the hopper. It is cleaned by turning the crank at the rear of the machine, which shakes the filter clean.
5. A drive system is provided. Pulling the lever on the handlebar operates a clutch wheel. The clutch wheel drives both rear wheels via a differential axle.
6. A parking brake is provided. It stops the clutch wheel from turning, which locks up both rear wheels.
7. Power for the main broom, vacuum fan, and drive system all comes from a large electric motor. A second motor drives the side broom.
8. The battery must be recharged after extended use. It will run the machine for about 3-4.5 hours on a charge. Remember that running the battery down too low will require recharging the battery twice to pick it back up again.



FORWARD MOTION OF SWEEPER BRINGS DIRT TO RAPIDLY ROTATING MAIN BROOM. MAIN BROOM KICKS IT UP TO HOPPER.

## **OPERATING TIPS**

The machine can only pick up dirt when it runs over it. It can not pick up dirt while sitting still.

Some bulky articles are hard to pick up and require a lot of floor space in front of the article to give the main broom a chance to "grab" the item.

Sweeping smart means avoiding dead ends. If you have to back up the machine out of a corner, you will probably leave some dirt behind.

Slow down if the floor is very dirty, or if you notice the machine is not picking everything up. The machine can only transfer so many pounds of material per minute.

# **OPERATING INSTRUCTIONS**

## **1. PLEASE CAREFULLY READ WARNINGS ON PAGE TWO OF THIS MANUAL.**

Refer to Page 4 for location of controls.

## **2. To make the machine move under its own power - without sweeping:**

- Turn on Main Switch
- Make sure both brooms are off ground. (See Steps 5 & 6 Below)
- Gently pull clutch lever, on handle bar, towards you. You can regulate speed by varying how hard you pull on this lever.

## **3. To Stop: Let go of the clutch lever.**

To stop machine when going down hill, set parking brake, by pushing the clutch lever down and forward. This locks rear wheels.

## **4. To Sweep: Main broom only.**

Pull main broom lever to the right to lower broom to the floor. Broom will drop, causing lever to move toward front of machine

**Note that the machine will not sweep unless broom is lowered to the ground.**

## **5. To Sweep: Main and side brooms.**

Pull side broom lever to the left to lower brush to the floor. Broom will drop, causing lever to move toward front of machine.

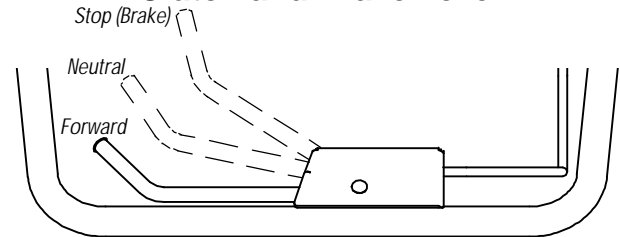
Then turn on the side broom.

*Operating Tip: When side broom is in use, the broom should contact the floor from about 11 O'Clock until about 5 O'Clock. (See Page 11 for illustration).*

*The adjuster is under the hood (lid) as shown. (Page 4, Item 10). Turn the knob clockwise to raise the broom.*

**NOTE:** Side Broom does not work by itself. Main broom must be down if sweeper is to pick up anything.

## **Clutch and Brake Lever**



Pull the lever toward you to go forward. The harder you pull, the faster the machine will go.

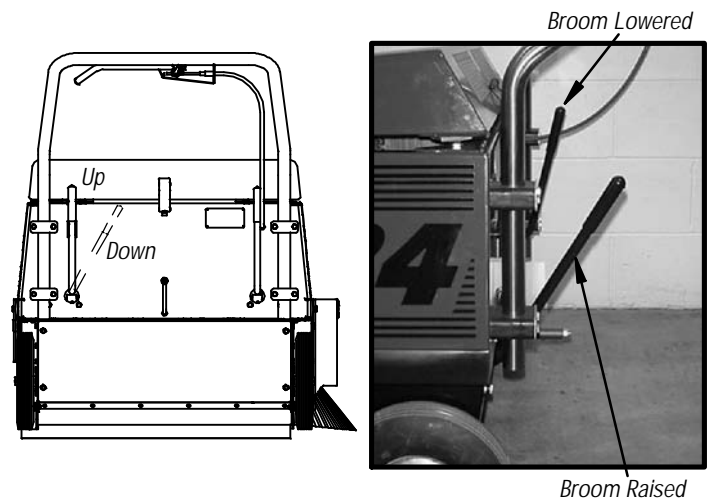
Release the lever to coast to a stop.

Push this lever down towards the ground and then forward to engage the brake.

You do not normally need to use the brake to stop.

Always use the brake when you park the machine and pick the brooms up off of the floor to avoid "Flat Spotting" them.

## **Main Broom Control:**



Pull main broom lever toward you, and then toward the center of the machine. This releases the catch and permits the main broom to drop.

To bring the main broom back up again, pull lever from "Lock" position, into "Release" position.

# **OPERATING INSTRUCTIONS**

## **6. To Sweep a Wet Floor.**

If you are going to sweep a wet surface, you should do so with the air system shut off. Otherwise, the vacuum fan will pull water into the filter, making it muddy and hard to clean.

To shut off the air to the filter, open the small door at the end of the back painted filter housing (Page 4, Item 12).

**NOTE:** Remember to close the air shut-off door again, when you're back on dry pavement or you'll blow out dust wherever you sweep.

## **7. To Unload Hopper.**

When machine stops sweeping well, the hopper is full.

Turn off the machine. Then turn the shaker crank handle at the rear of the machine about ten times. The handle should then be left in the vertical position. This cleans the filter. Finally, pull the dirt hopper all the way out of the machine. It has a handle on each side.

When you put the hopper back, make sure crank handle is straight up and down - or the cleaning mechanism will prevent the hopper from sliding back in.

## **8. Watch out for low battery.**

**NOTE: The Sweeper will shut itself off when the battery gets too low. Low voltage could otherwise damage the motors.**

A red warning light (Page 4, Item 18) warns you just before battery is completely discharged. Don't get caught with a dead battery. Return back to base for a recharge early. Batteries vary in their energy capacity. O.E.M batteries usually offer between three and five hours of service on a charge.

## **9. Side Broom's Circuit Breaker.**

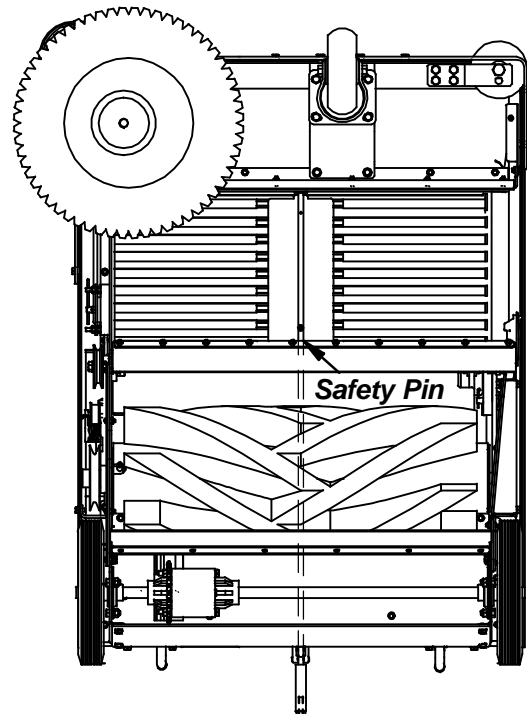
If the side broom stops by itself, its protective circuit breaker has probably tripped. The usual reason for this is that the side broom is adjusted improperly and has too much down pressure. Breaker will automatically reset. See Sidebroom Adjustment in this book, Page 11.

## **To Remove The Dirt Hopper:**



**CRANK should be vertical before removing or replacing the hopper drawer. Otherwise, you may break the safety pin on the crank mechanism.**

## ***Underside of Machine***



*Handle Bar Asm, Not Shown*

### **SAFETY TIP: Recharging**

- 1. Always Turn Off Machine and Set Parking Brake before Charging.**
- 2. Always Leave the Hood (Lid) Open.**

# **OPERATING INSTRUCTIONS**

## **10. Recharging Battery.**

### **Built-In Battery Charger.**

If your machine is equipped with a built-in battery charger, simply turn off the machine, set the brake, open the hood (lid), and plug in the charger to a wall outlet with the correct voltage.

In North America, our chargers are usually equipped for a single phase 110V (60Hz) operation, the same power as used in houses. The three prong plug requires a grounded outlet. Do not use without grounding.

The built-in charger is completely automatic. Its electronic circuitry will tell it when the battery is charged, and shut itself off. After the battery achieves correct voltage, the charger will give a "polish" to the battery by shifting to high voltage input for a limited period of time.

The green light on the right hand side of the charging unit will glow when the charger is plugged in - provided that the charger is also plugged in properly. The green light will go out at the end of the charge cycle.

### **External Battery Charger.**

If you use an external battery charger, unplug Andersen connector before beginning charge. Open hood and follow the charger instructions.

**NOTE:** Some battery chargers are not automatic, and will not shut off when battery is fully charged. You can seriously damage a battery by overcharging it.



## **BATTERY SAFETY WARNINGS**

**Charging a battery produces explosive hydrogen gas.**

**Leave the hood (lid) of the machine open while the battery is charging to avoid buildup of gas inside machine.**

**Do not smoke or expose open flame or spark to area around battery during charging.**

**Follow the instructions that came with your charger. Many chargers are not automatic and can over-heat the battery if not properly set.**

**Watch for battery acid. If acid gets in the eye, wash out with water for twenty minutes and call a physician.**

## ABOUT BATTERIES:

---

We do not recommend use of anything but a deep cycle battery, one made to run a long time between recharging. An automotive battery, designed to be recharged (by the cars alternator) right after short use, will give poor service.

We do not recommend use of a battery that weighs more than 120lbs, since this could make steering difficult.

---

## GENERAL RULES FOR BATTERY CARE:

1. **KEEP THE BATTERY CLEAN.** Dirt on the battery transmits electricity and can cause quicker discharge.
2. **KEEP THE BATTERY FULL OF WATER.** A low water level can ruin the battery very quickly. Water should always cover the plates inside the battery. (You see the tops of them when you remove the cap). Many batteries have "rings" that are visible inside the cell holes. In these batteries, fill to ring. We recommend you **use only distilled water**. The minerals in ordinary water can coat the lead plates, shortening battery life.
3. **CHARGE THE BATTERY WITH THE CAPS IN PLACE.** Do not remove the caps for a normal charge. These caps include proper venting, and will keep the charging process from projecting a thin layer of acid on surrounding machine parts.
4. If you must use an external charger, be sure to unplug the Andersen connector before doing so. Otherwise, you can damage the red light warning system. Do not use an external charger that is too big for the battery or wrong voltage. (Charger must be 12V and must not put out more than 25 amps).
5. **ACID.** Batteries contain corrosive sulfuric acid. As mentioned above, leave the vented caps in place when charging, so acid will not bubble out of the battery. Take care that acid does not fall on the steel surfaces of the machine; eventually it will cause the machine to rust.

Treat acid spills with water to dilute the acid. To clean up: use solution of water and baking soda, applied with a small brush. Keep using the solution until the fizzing stops. This will neutralize the acid.

6. **MAKE SURE CONNECTIONS TO THE BATTERY ARE TIGHT.** Loose connections will cause arcing, which will eat into and destroy the battery terminals.
7. **WATCH THE GREASE.** Never put grease on the inside of the connector. The grease will cause arcing and deterioration of the connector. You can put grease on the outside of the terminal after it is mounted to the battery.
8. **DO NOT HAMMER ON THE BATTERY OR ITS CONNECTORS.** Batteries are heavy but fragile. Hammering on the posts on the battery can break the connectors inside. Use a puller to remove connectors, not a hammer or screwdriver.
9. **DO NOT STORE BATTERY ON A CONCRETE FLOOR.** Doing so can cause quick discharge and even damage to the battery. Store the battery on wood, cardboard, or other self insulating material.

## MACHINE MAINTENANCE

**BATTERIES:** The highest maintenance item on your machine will be its storage battery. Please read the "About Batteries" section of this book.

**MAIN BROOMS:** Replace the main brooms when they stop sweeping to your standards.

**We recommend you use our brooms. They are made for your machine. Our brand of broom has a precision plastic core that is carefully balanced and has machined insert points so the broom fits tightly on the machine's hubs. Brooms made by "will fit" companies to fit our machines are often made with rough drain-pipe cores. They often bounce even when new. Bouncing brooms do not sweep.**

A new main broom has two and a half inches of fiber on it. Normally, a main broom with one and a half inches or less of fiber will not sweep as well as a new broom.

We recommend the "Vee" type filter pattern, which is able to fit the hopper fuller than the "Spiral" type filter pattern.

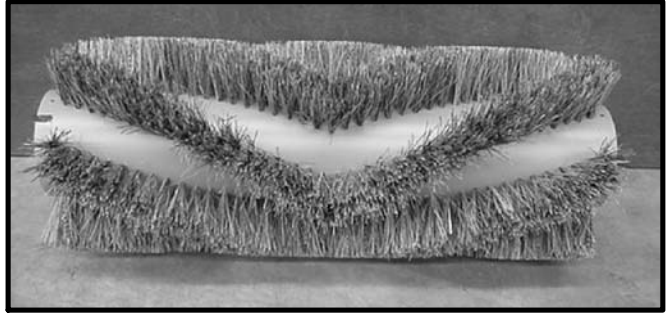
### MAIN BROOM REPLACEMENT

Note that you do not need to reverse the broom periodically - as on other brands - because our broom suspension does not bend and splay the outerfibers of the broom.

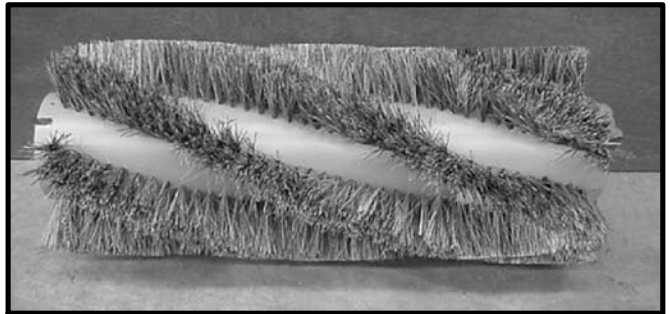
#### TO REPLACE MAIN BROOM:

1. Turn off machine and unplug battery connector. Shake the filter.
2. Raise main broom off ground with broom lever.
3. Remove dirt hopper and broom access door (3 screws).
4. Unbolt broom as shown (Item 3 in photo).
5. Pull out old broom.
6. Push on new broom-being careful to line up the slot on the broom with the driver's slots. Push the broom all the way in.
7. Make sure "Vee" of the Vee broom points forward when viewed from the top.

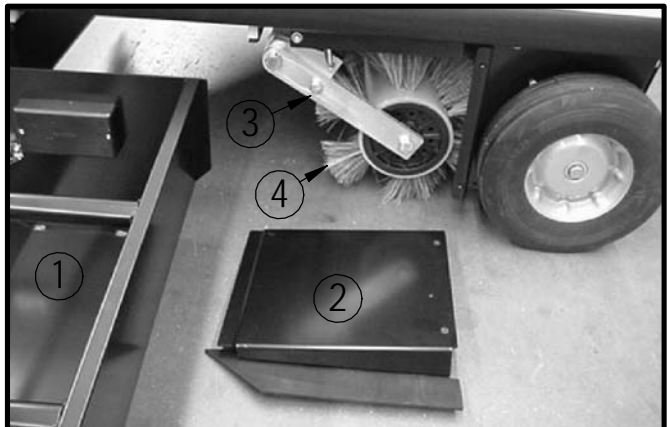
## MAIN BROOM



*Vee-Broom. Preferred Style*



*Spiral-Broom. Does not sweep as well as Vee-Broom.*



*Remove (1) Hopper, (2) Access Panel, (3) Idler Arm (1 Bolt), and then remove (4) the old Broom.*

### **SPECIAL NOTE:**

**Always "park" the main broom when machine is not in use.**

**If you leave the main broom on the floor for an extended period without turning it, you will put a flat spot in its fiber.**

**This will cause "broom bounce" and bad sweeping.**

# MACHINE MAINTENANCE

## TO REPLACE SIDE BROOM:

1. Turn off machine and unplug battery.
2. Raise side broom off of ground with control lever.
3. Turn side broom adjustment knob clockwise until broom is as high as it will go. **(Operating Tip:** The knob will be easier to turn, if you pull on the broom lever at the same time; this relieves pressure from the adjustment).
4. Pull clevis pin from side broom and remove broom. (New broom has replacement plastic mount included, so no need to unscrew the old one).
5. If your machine's side broom mounting shaft has more than one mounting hole for the broom pin, always use the top hole.
6. Lower broom - with motor off - and turn adjustment control until broom pattern shows 11 O'Clock to 5 O'Clock contact pattern. (see next column).

## TO ADJUST DRIVE CHAIN

The drive chain drives the rear wheels. If it is too loose, it will come off of the drive sprocket. If it is too tight, the chain will bind and/or the clutch lever will become hard to operate. In either case, the chain will make "popping" noises that show chain adjustment is needed.

A properly adjusted chain leaves about 1/4 to 1/2 inch of slack, as shown.

To adjust the chain, it is not necessary to remove the battery if you use the right tools.

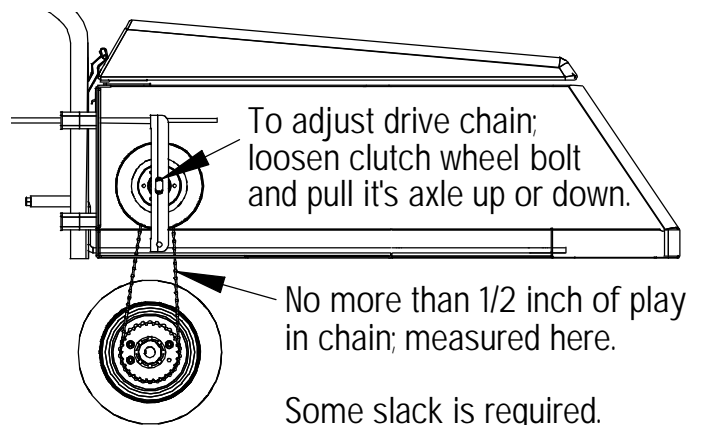
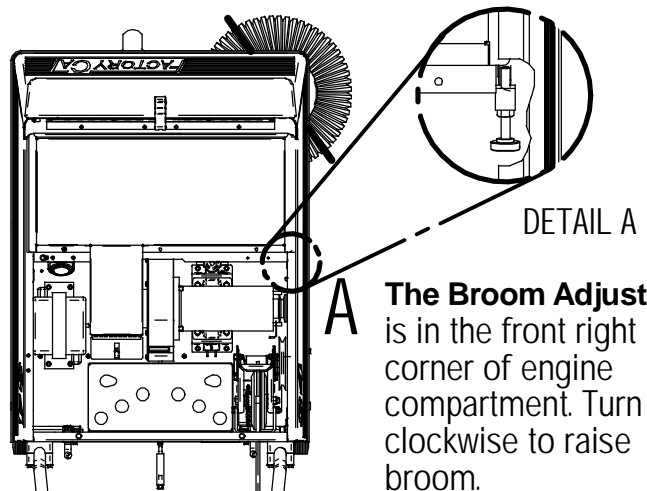
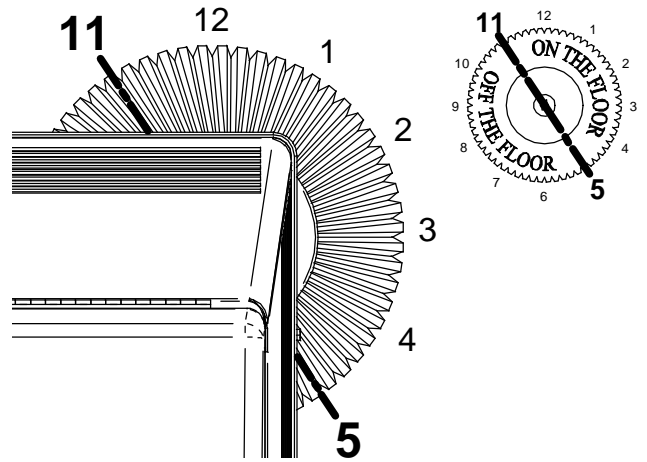
- 1.) Turn off machine and unplug Andersen connector.
- 2.) Pull clutch lever all the way closed (lever touching handlebar) and tie or tape it into that position.
- 3.) Use a 3/4" combination wrench on left side of bolt that goes thru the clutch wheel. Use a 3/4" ratchet (socket) wrench on the right side.
- 4.) Loosen the through bolt and pull up on it with the two wrenches.
- 5.) Tighten bolt.
- 6.) Test unit. Chain should not bind the clutch lever action and should not slap against the rear cover.

# SIDE BROOM ADJUSTMENT

Side broom will not sweep if it is flat on the ground.

Fiber should touch the ground in an 11 O'Clock to 5 O'Clock pattern as shown here.

## FRONT OF MACHINE (Top View of Machine)



# MACHINE MAINTENANCE

## CLUTCH AND BRAKE ADJUSTMENT

As explained in "How it Works", (Page 5), the clutch and brake operate with the same control and by way of the same clutch donut.

### If the clutch slips:

**1. Inspect the clutch donut.** If in good repair, then adjust. If donut looks melted, then replace - it got too hot from slipping.

**2. To adjust clutch:** Loosen the nut at the end of the cable where it enters the handlebar housing. Also loosen the nut inside the handlebar housing. Now, tighten the outer nut until the clutch engages and the machine starts to creep forward. Loosen the outer nut, one turn, from that point. Tighten the inner nut. Test.

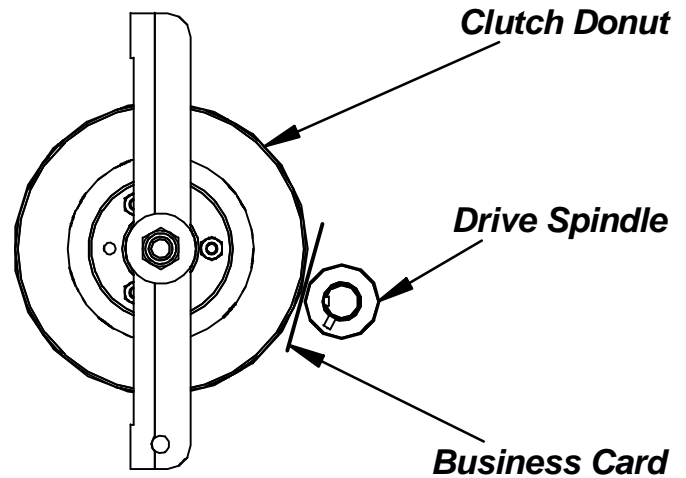
**NOTE:** The brake should adjust automatically with the clutch. If the clutch still works OK, but the brake does not, or vice-versa, follow steps on right side of this page.

If kept adjusted, the clutch donut should last several years. To replace the donut:

1. Turn off the machine and unplug the battery. Remove the rear protective panel to have access to rear axle.
2. Remove the master link in the drive chain. This link is visibly different from the others. Removing the master link permits removal of the chain.
3. Remove clutch cable end from the clutch fork.
4. Remove the transmission from machine. (4 bolts from bottom).
5. Remove the clutch fork from the machine by removing the mounting pin.
6. Remove the clutch wheel from the fork.
7. Unbolt the three bolts that hold the clutch wheel together to remove the donut.
8. Install new donut on clutch wheel. **Be sure you mount clutch wheel concentric on axle.**
9. Reverse procedure to install.

## Clutch Adjustment:

When set properly, machine should not "creep" in neutral, but lever should begin to take hold when lever is depressed 1/2" or so. To set neutral, a thin business card should just barely fit between clutch donut (wheel) and drive spindle (capstan). Adjust clutch at handlebar.

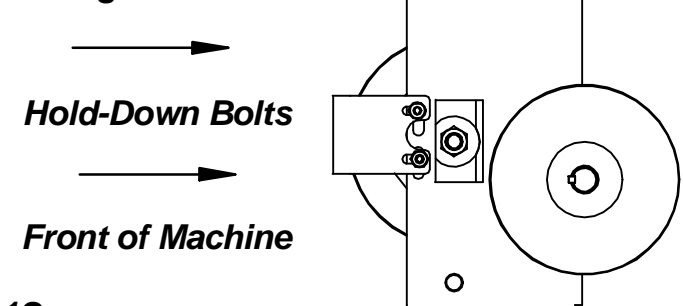


*Adjusting Nut Location*

## Brake Adjustment:

1. Adjust clutch first.
2. Test brake.
3. If brake does not hold, loosen the (4) bolts holding the brake shoe to the transmission body, and push shoe forward.
4. Re-tighten (4) bolts.
5. Retest. If you can not adjust successfully, replace clutch donut.

### To Tighten Brake Shoe



# TROUBLESHOOTING GUIDE

## **Check for Cause of Problem in Order Shown:**

### **PROBLEM: MAIN MOTOR WILL NOT RUN.**

1. Check that the hoods safety switch, (Page 4, Item 17), is firmly down.
2. Check battery voltage. (When voltage is too low, circuit breaker will cut out).
3. Check for loose circuit wiring.
4. Check for defective on/off switch.
5. Check for defective relay.
6. Check for defective circuit breaker.
7. Check and replace motor brushes. Check also for burnt motor armature.

### **PROBLEM: SIDE BROOM MOTOR WILL NOT RUN; MAIN BROOM IS OK**

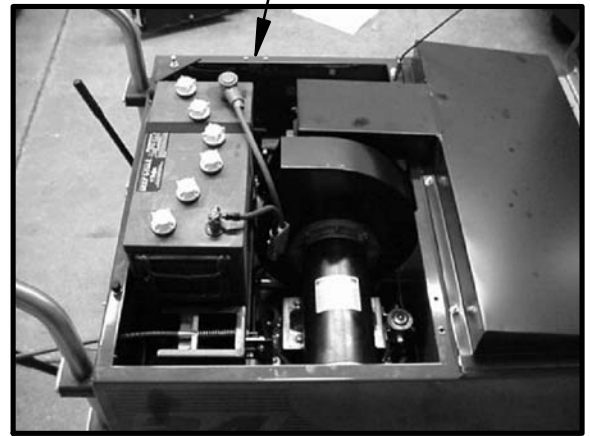
Can you rotate the broom by hand? If no, then:

1. Check In-Line fuse. (This is in the wiring harness on early machines, and mounts under the hood, on the left-hand under side lip of the body. Current machines use a circuit breaker, situated in the same location).
2. Check too see that the wiring harness on the side broom arm has not become disconnected.
3. Check the side broom switch.
4. Check broom motor.

If you can rotate the side broom by hand, then:

1. Check that the drive connector, inside bearing tube, has not become disconnected. It will do this to save the motor and gear drive.
2. Check the side broom motor.

**Red Fuse Holder or Circuit Breaker is under this edge.**



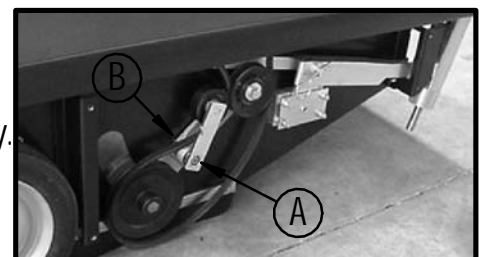
### **PROBLEM: MAIN BROOM WORKS, BUT MAIN BROOM DOES NOT TURN.**

1. Check to see if something is caught in main broom, such as strapping. This material will wind itself around the edges of the broom, locking it up and causing the belt to slip.
2. Check both drive belts for wear and adjustment.
3. Check the Main Broom Belt Tensioner. The belt tensioner moves constantly to take up slack in the belt as the broom moves up and down with floor irregularity. It should be greased with chassis grease every two years.

**To grease: Unscrew vertical Allen-head retaining screw (Item B) BEFORE unscrewing lateral Allen-head screw (Item A).** Otherwise you can damage the main broom arm. Remove lateral screw (A) and insert grease in arm's Oilite bearing. Reassemble. Do not overtighten lateral screw (A) or arm will bind. Screw in (B) once position of (A) is correct.

### **PROBLEM: MOTOR RUNS, BUT MACHINE WILL NOT SELF-PROPEL.**

1. Make sure belt between motor and transmission is adjusted properly.
2. See if clutch slips. If so, adjust, following the procedure in this book. If adjustment cannot make clutch work properly.
3. Replace the rubber clutch donut.
4. Check chain and sprocket on differential axle.

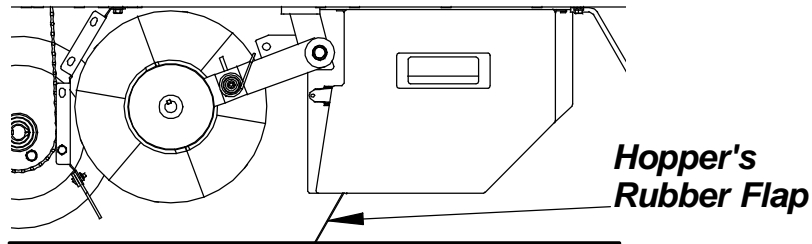


# TROUBLESHOOTING GUIDE

---

## **PROBLEM: BROOMS ROTATE, BUT MACHINE DOES NOT SWEEP WELL.**

1. Main Broom may be worn out. While machine can sweep with as little as one half inch of main broom fiber, main broom should have 1.0" of fiber or more to sweep really well.
2. Main Broom bounces. This will cause skipping over debris. If this occurs, broom must be replaced.  
Cause of broom bounce is generally bent fiber on one side, causing broom to become oval. This, in turn, is caused by leaving the broom on the ground for long periods of time without broom rotating, which will bend the fiber. A second cause is use of a main broom that is made incorrectly. For this reason, avoid "will-fit" main brooms made by other manufacturers to fit our machines. Our design requires brooms in perfect balance and perfectly round.
3. Check rubber flap on lip of the hopper. **This piece is very important to good sweeping, and must be in good condition or machine will throw debris forward of machine.** If flap is torn or missing, replace with a new part.



## **PROBLEM: MACHINE SWEEPS UP DEBRIS FINE, BUT BLOWS DUST.**

1. Filter is dirty. With power off, turn crank 20 times to clean filter.
2. Air is shut off. Open air shutoff control.
3. Filter is clogged from mud. Remove and inspect filter. Clean if necessary by shaking and vacuuming the filter.
4. Air leaks. Check and replace neoprene floor seals as needed.
5. Is fan turning with main motor? (Has set screw come out of fan?).

## **PROBLEM: MACHINE SWEEPS OK, DUST CONTROL PICKS UP DUST, BUT BLOWS IT INTO THE ENGINE COMPARTMENT.**

1. Remove the black filter cover. *(There are three screws at the rear. Cover fits into a slot at the front).* Then check for improper seal between filter and body. Filter is taped to the filter element support grill (Part No. 4-505) with double-sided carpet tape. This seal must be tight.
2. Check filter for pinhole leaks and repair or replace as needed. *(You can pull filter and its mounting grid straight out of the machine once the filter cover is removed. You can also inspect the filter from underneath the machine).*

# ***SPARE PARTS BOOK***

## ***Walk-Behind Sweepers***

Spare parts are sold through authorized Dealers. If you have forgotten your dealer's name, or you have moved the machine to a new location, please **Call us at: 1 (800) 634-4060, or Fax us at: 1 (866) 901-3335** and we will re-establish a dealer contact for you.

### **TO ORDER PARTS:**

Please provide the machine's Serial No. with your order. Normally, ordinary parts orders are shipped out the same day the order is received.

### **EMERGENCY ORDERS:**

Within the Continental United States, We can supply any part that weighs under 70lbs within 3 business days, not counting weekends or National Holidays.

However, if parts are ordered on an "Emergency" basis, this means that we will ship them by fastest means, generally by air courier service, at the customers expense.

### **FREIGHT:**

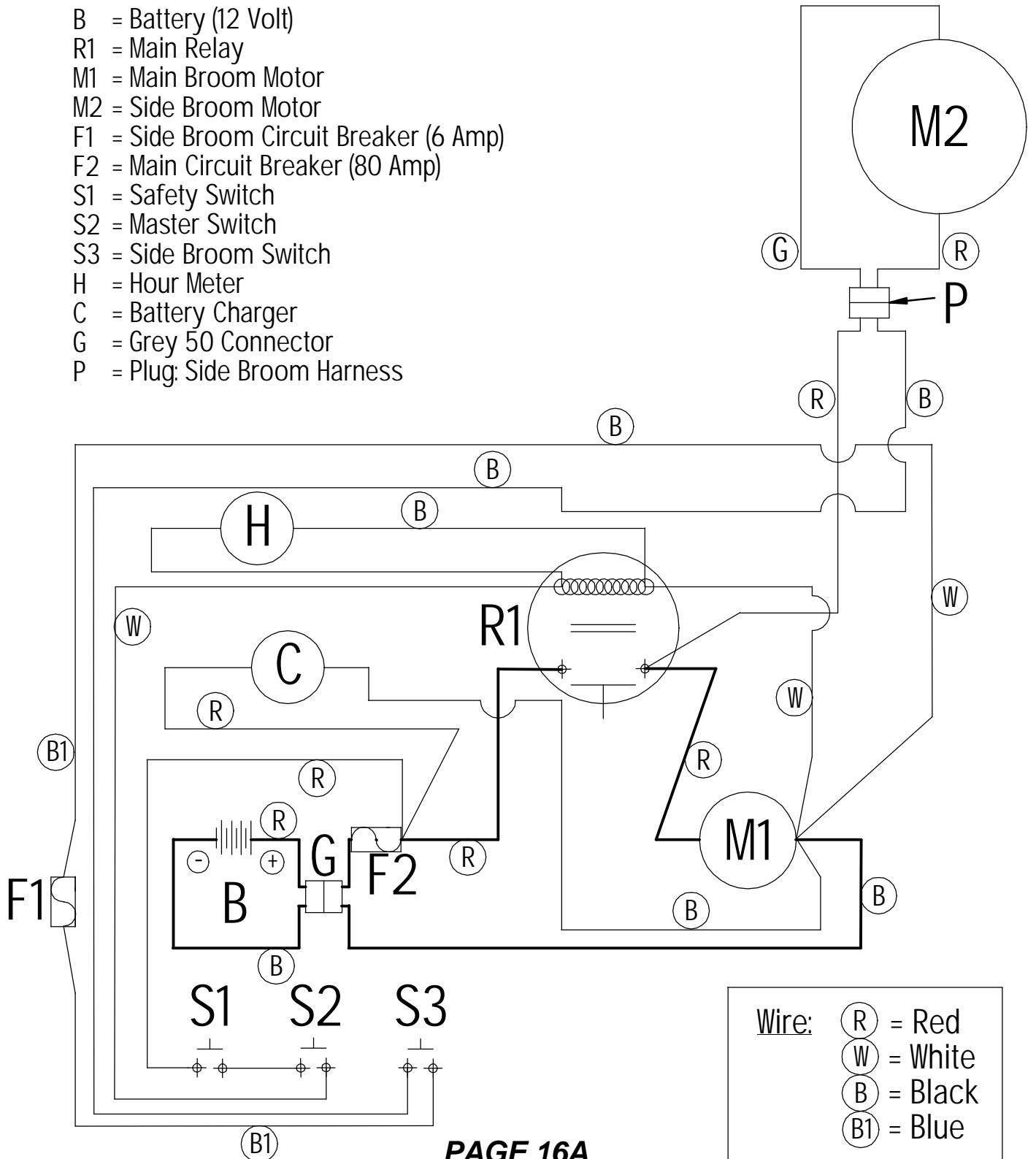
Within the United States, the normal shipment method is by customer choice, while the emergency shipment method is by R.P.S. choice - normally by fastest means. This means that emergency orders will generally cost the customer more than normal orders.

In both cases, the customer is responsible for all freight costs.

# Wiring Schematics

For machines after Serial No. "BY-2220"  
with Side Broom Circuit Breaker

- B = Battery (12 Volt)
- R1 = Main Relay
- M1 = Main Broom Motor
- M2 = Side Broom Motor
- F1 = Side Broom Circuit Breaker (6 Amp)
- F2 = Main Circuit Breaker (80 Amp)
- S1 = Safety Switch
- S2 = Master Switch
- S3 = Side Broom Switch
- H = Hour Meter
- C = Battery Charger
- G = Grey 50 Connector
- P = Plug; Side Broom Harness

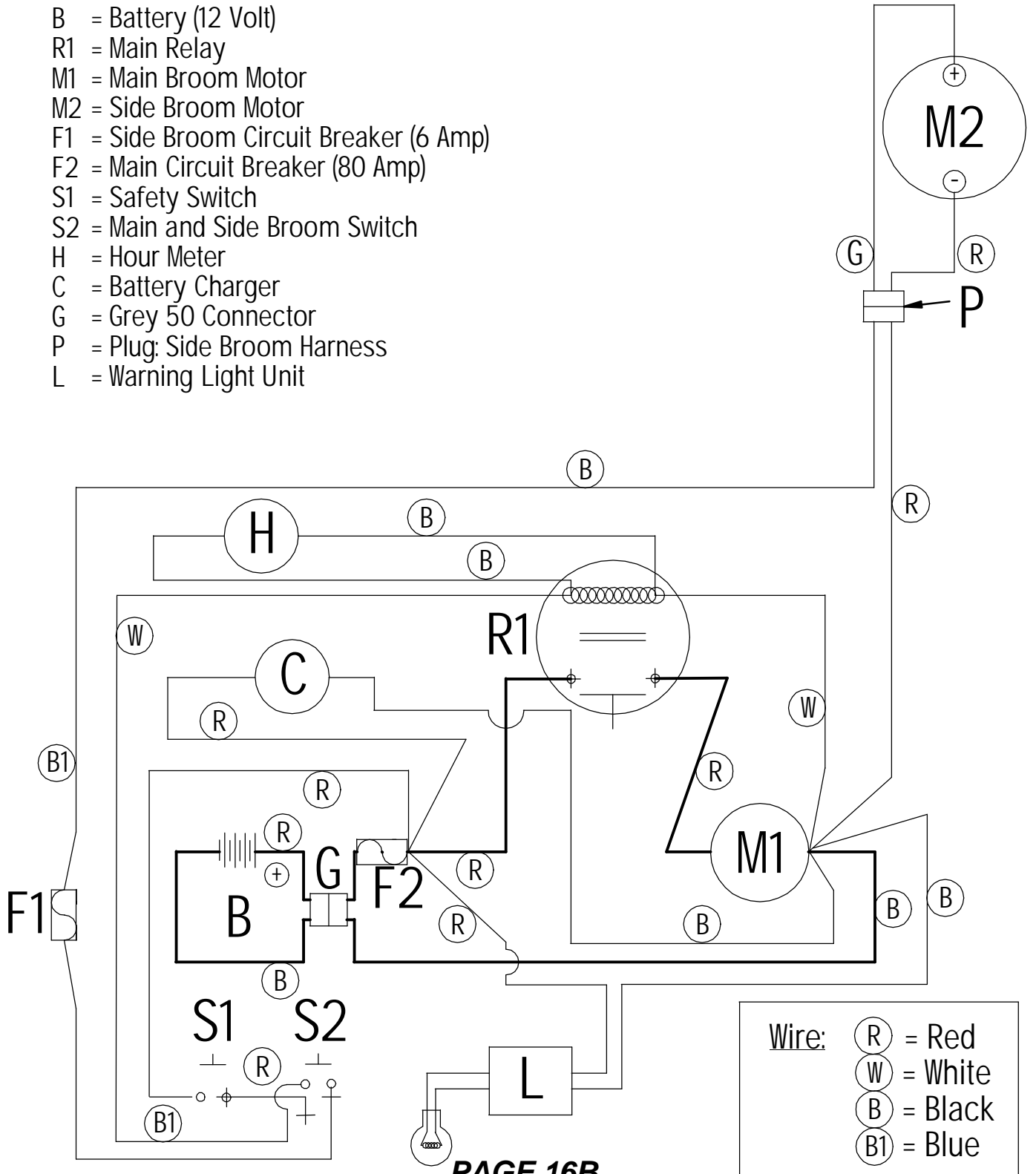


Wire:	(R) = Red
	(W) = White
	(B) = Black
	(B1) = Blue

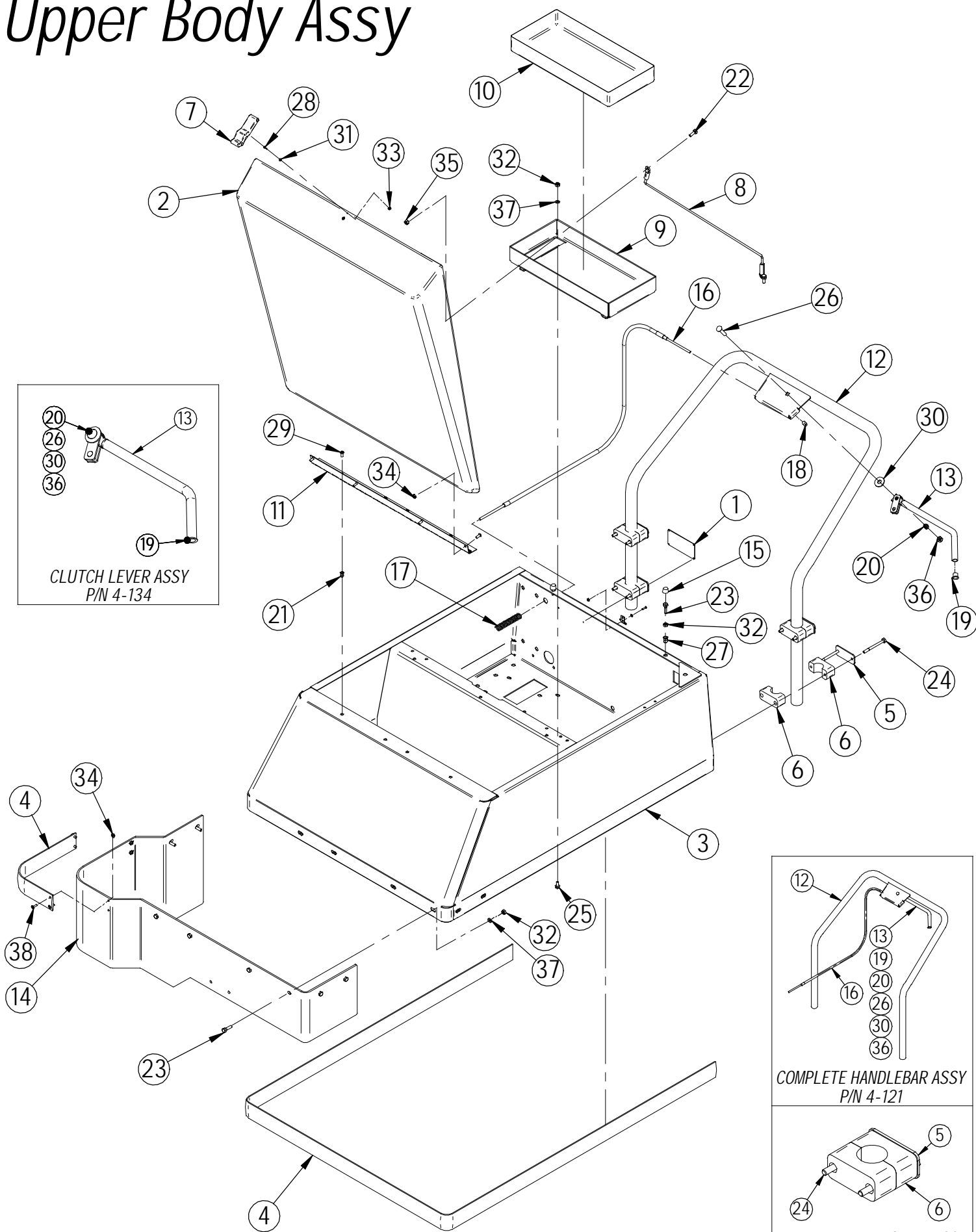
# Wiring Schematics

For machines after Serial No. "CI-3200" with  
Single Electrical Switch for Main and Side Brooms

- B = Battery (12 Volt)
- R1 = Main Relay
- M1 = Main Broom Motor
- M2 = Side Broom Motor
- F1 = Side Broom Circuit Breaker (6 Amp)
- F2 = Main Circuit Breaker (80 Amp)
- S1 = Safety Switch
- S2 = Main and Side Broom Switch
- H = Hour Meter
- C = Battery Charger
- G = Grey 50 Connector
- P = Plug: Side Broom Harness
- L = Warning Light Unit

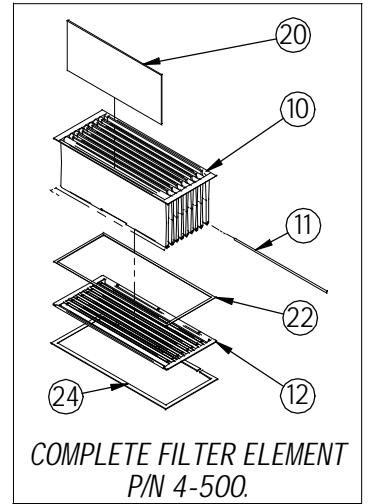
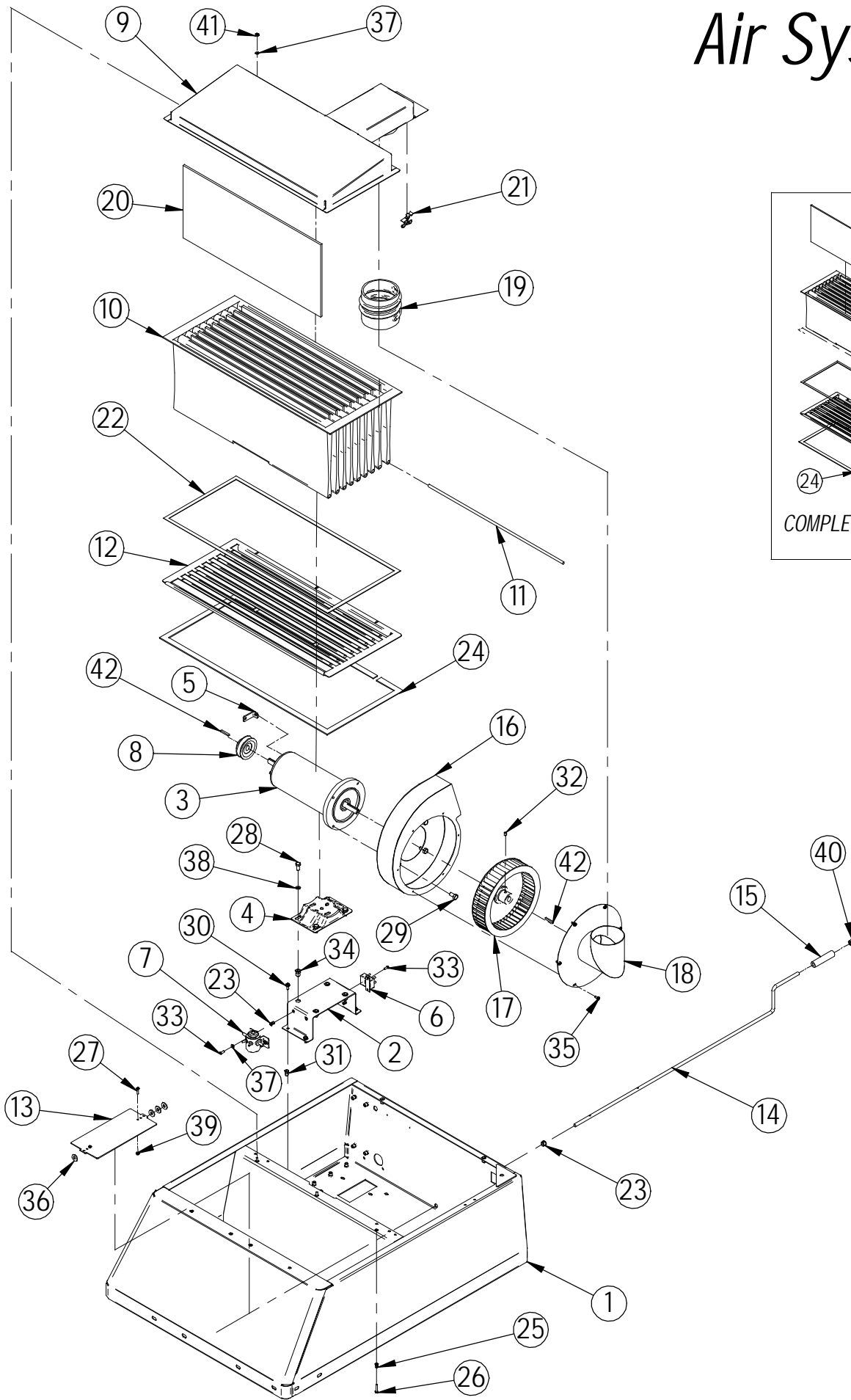


# Upper Body Assy



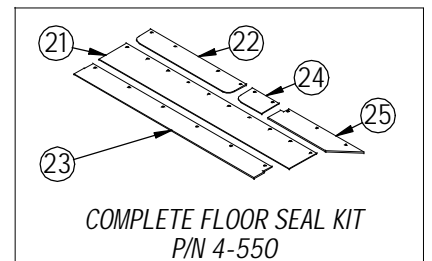
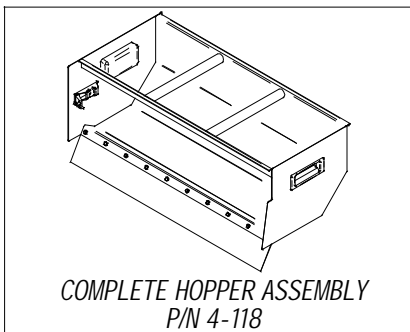
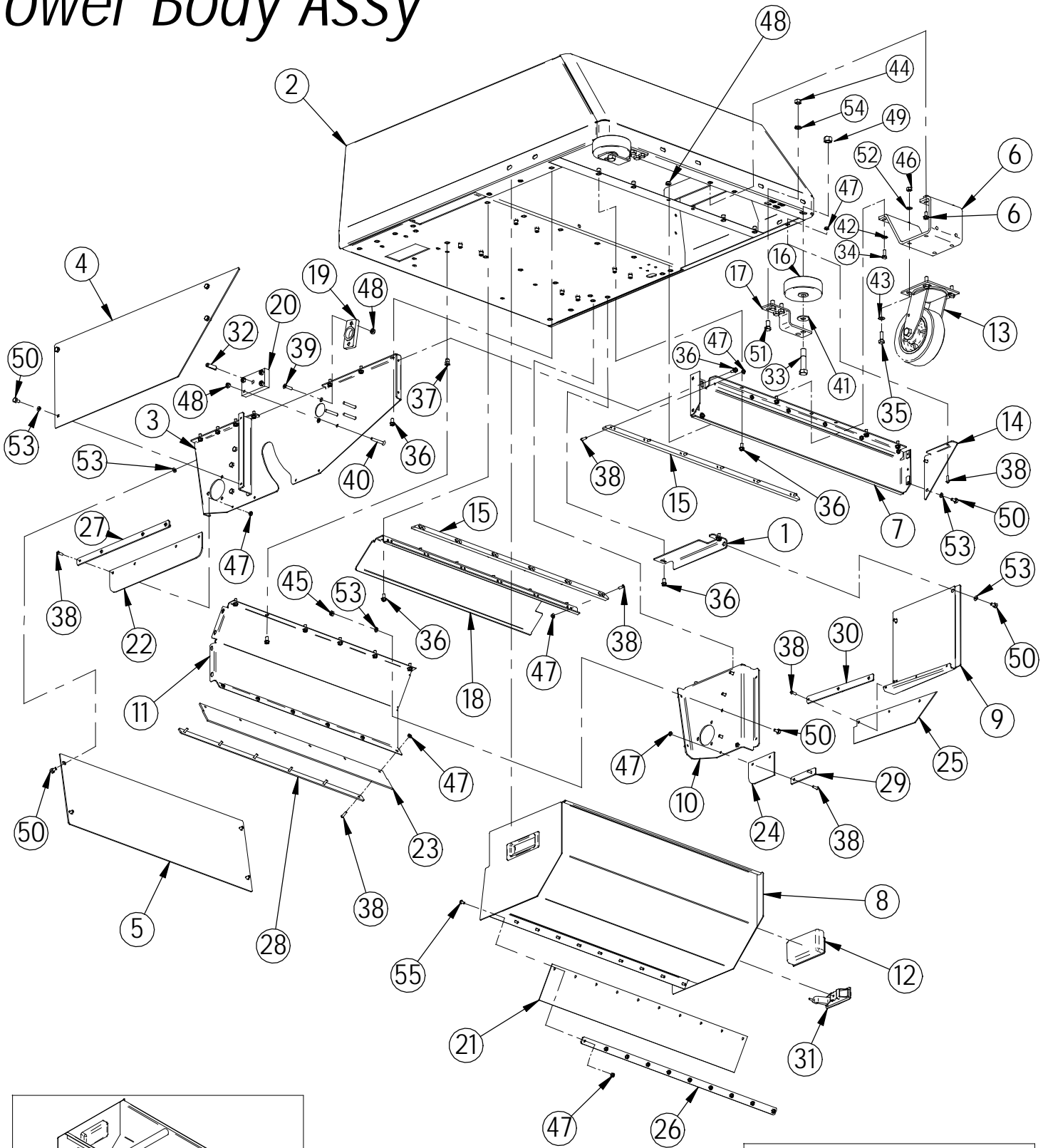
Item	Part No.	Description	Comments	Qty
1	4-101 21-0101	SERIAL NO. PL. (FACTORY CAT) SERIAL NO. PL. (TOMCAT)		1
2	4-110	HOOD		1
3	4-111	MAIN BODY		1
4	4-112	2" BLK STRIP BUMPER	12 FT SECTION	1
5	4-122A	HANDLEBAR MTG BKT	4-122 INCL. 4-122A, 4-122B, & HARDWARE	4
6	4-122B	BLACK PLASTIC CLAMP	4-122 INCL. 4-122A, 4-122B, & HARDWARE	8
7	4-124	HOOD LATCH	COMPLETE 2 PC WITH RIVETS	1
8	4-126A	HOOD CABLE		1
9	4-128	BATTERY TRAY		1
10	4-128A	BATTERY TRAY LINER		1
11	4-131	HINGE 23 3/4" SS		1
12	4-132	HANDLE BAR WELDMENT	P/N 4-121 INCL. ITEMS 12,13,16,19,20,26,30, & 36	1
13	4-134A	CLUTCH LEVER	P/N 4-134 INCL. ITEMS 19,20,26,30,& 36	1
14	4-140	BUMPER	INCLUDES HARDWARE (OPTIONAL)	1
15	4-170	RUBBER HOOD STOP		2
16	4-370	CLUTCH/BRAKE CABLE		1
17	4-371	CLUTCH CABLE RETURN SPRING		1
18	4-379	CLUTCH CABLE ADJ. NUT		1
19	4-387	TUBE PLUG		1
20	4-388	CLUTCH TENSION SPRING		1
21	H-1032HCN	HCN #10-32		7
22	H-13003	HCS 1/4"-20 X 3/4"		2
23	H-13005	HCS 1/4"-20 X 1"		10
24	H-13015	HCS 1/4"-20 X 3"		8
25	H-19901	FB CASHD 1/4"-20 X 1/2"		4
26	H-21259	CB 5/16"-18 X 1 1/2"		1
27	H-250HCN	HCN 1/4"-20		50
28	H-28679	PPH #4-40 X 1/2"		4
29	H-29049	PPH #10-32 X 1/2"		8
30	H-33008	FW 3/8" SAE		1
31	H-33066	FW #4 SAE		4
32	H-36102	HN 1/4"-20		14
33	H-37006	NYLOK #4-40		4
34	H-37015	NYLOK #10-32		8
35	H-37018	NYLOK 1/4"-20		2
36	H-37021	NYLOK 5/16"-18		1
37	H-71063	LW 1/4" SS		12
38	H-72683	FHP #10-32 X 5/8"		4

# Air System



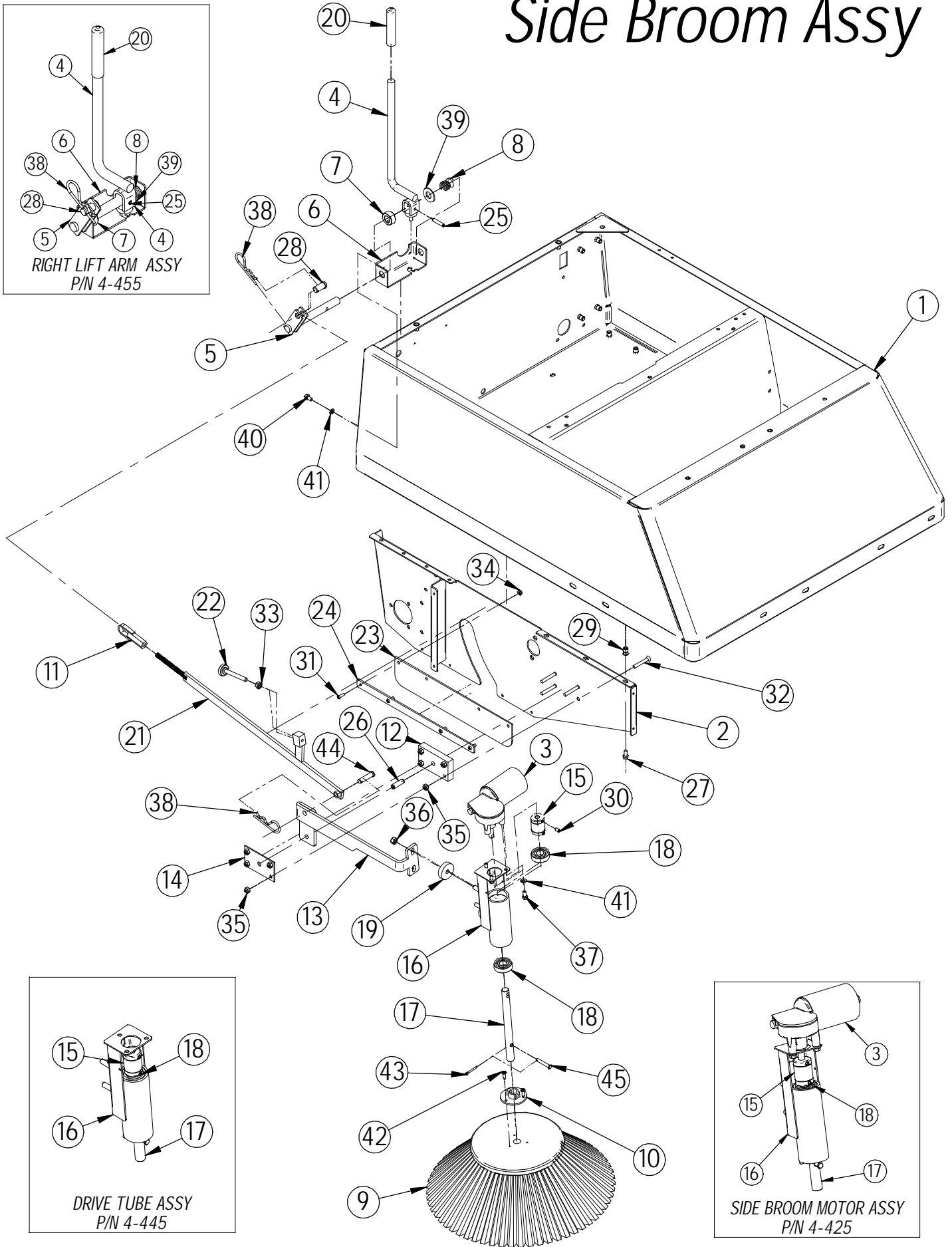
Item	Part No.	Description	Comments	Qty
1	4-111	MAIN BODY		1
2	4-125	MOTOR SUPT BRACKET		1
3	4-201	12V,TWIN SHAFT MOTOR		1
4	4-201B	MOTOR CRADLE		1
5	4-210	TERMINAL CLIP		1
6	4-232	CIR. BREAKER - 12V/80A		1
7	4-233	12V SOLENOID		1
8	4-301	MAIN DRIVE PULLEY		1
9	4-501	FILTER HOOD		1
10	4-502	FILTER ELEMENT	P/N 4-502 INCL. P/N 4-502K, SEAL KIT	1
11	4-503A	FILTER WEIGHT ROD	P/N 4-503 INCL. SET OF 9 RODS	9
12	4-505	FILTER GRILL		1
13	4-506	FILTER BEATER BAR		1
14	4-507	BEATER BAR		1
15	4-509	BEATER BAR HANDLE		1
16	4-511	BLOWER HOUSING		1
17	4-512	BLOWER WHEEL		1
18	4-513	BLOWER DOOR		1
19	4-520A	BLOWER HOSE		1
20	4-521A	FILTER SEPARATOR	P/N 4-521 INCL. SET OF 9 SEPARATORS	9
21	4-522	DOOR LATCH	INCLUDES SET OF 2	1
22	H-002	1/2" DBL SIDED TAPE	P/N 4-502K INCL. P/N H-002 & H-048	1
23	H-00287	.375 HEYCO COLLAR		1
24	H-048	3/16" PVC FOAM	P/N 4-502K INCL. P/N H-002 & H-048	1
25	H-1032HCN	HCN #10-32		15
26	H-10436-00106	HXMS #10-32 X 1"		1
27	H-10436-00107	FB #8-32 X 3/4"		1
28	H-13053	HCS 5/16"-18 X 3/4"		1
29	H-13103	HCS 3/8"-16 X 3/4"		1
30	H-19901	FB CASHD 1/4"-20 X 1/2"		1
31	H-250HCN	HCN 1/4"-20		50
32	H-25328	SSS CP 1/4"-20 X 3/8"		1
33	H-29048	RPH #10-32 X 1/2"		2
34	H-312HCN	HCN 5/16"-18		4
35	H-31810	HW #10 X 1/2		1
36	H-33008	FW 3/8" USS		1
37	H-33074	FW #10 SAE		2
38	H-33620	LW 5/16"		1
39	H-37012	NYLOK #8-32		1
40	H-37024	NYLOK 3/8"-16		1
41	H-37408	KN #10-32		1
42	H-K14320	3/16" X 1 1/4" KEY		2

# Lower Body Assy



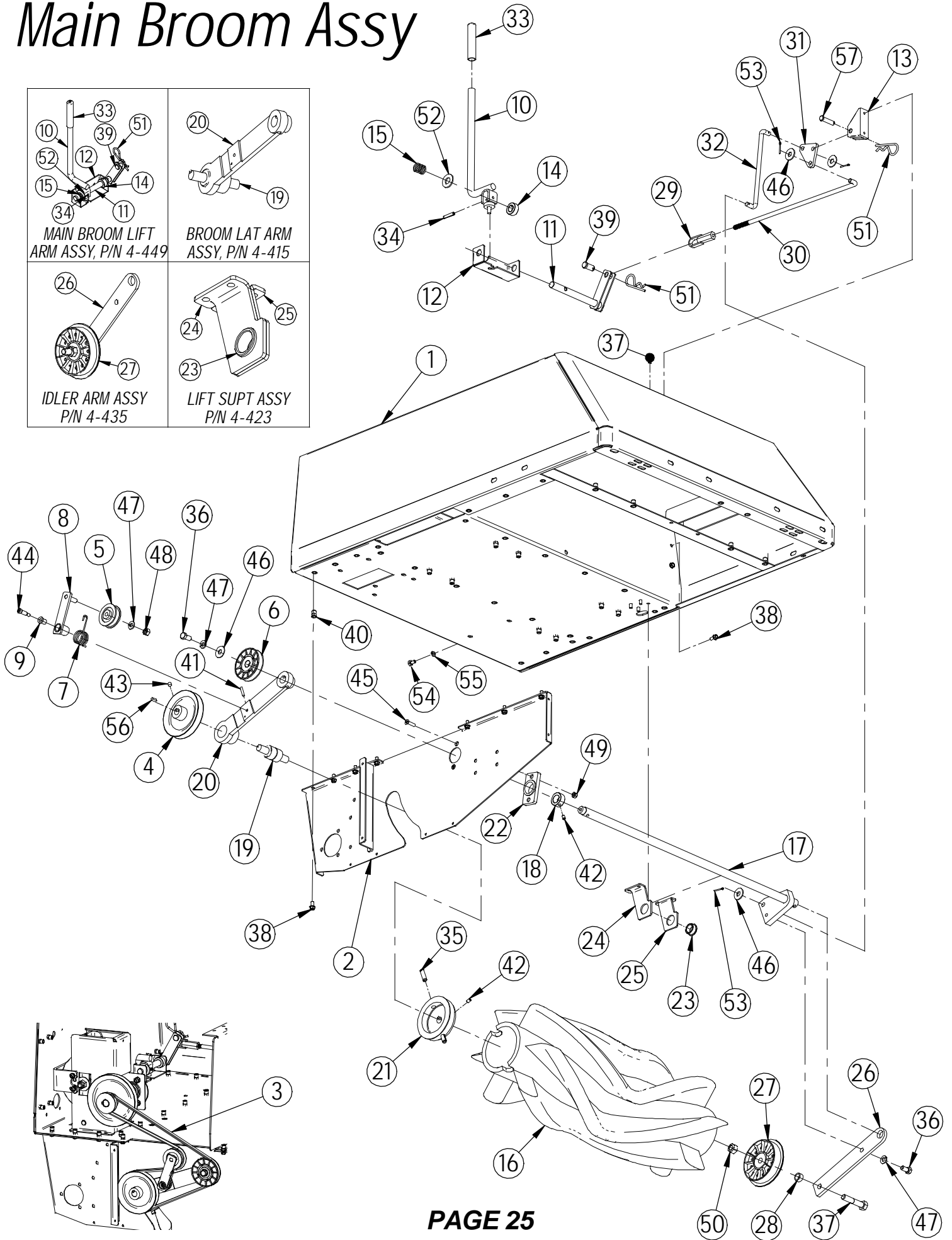
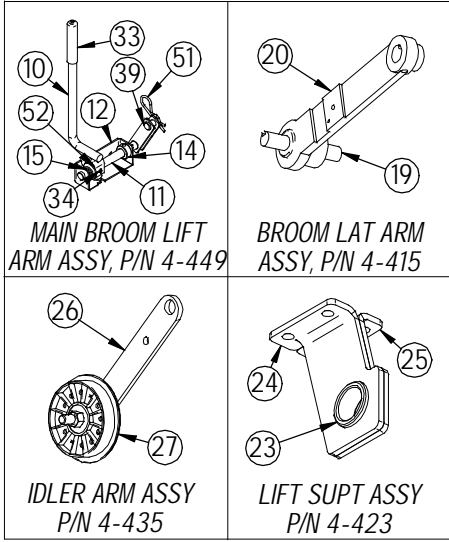
Item	Part No.	Description	Comments	Qty
1	4-108	DOOR MNT ANGLE		1
2	4-111	MAIN BODY		1
3	4-113	R. INNER SIDE PANEL		1
4	4-114	SKIRT PLATE, RT		1
5	4-115	SKIRT PLATE REAR		1
6	4-116	CASTER MTG BRACKET		1
7	4-117	FRONT CROSS PANEL		1
8	4-118B	HOPPER BODY		1
9	4-119	BROOM ACCESS HATCH	4-118 INCL. 4-118B, 4-127, 5-130, SEALS & HARDWARE	1
10	4-120	REAR INNER PANEL, LT		1
11	4-123	INNER CURVED PANEL		1
12	4-127	HANDLE		2
13	7-130B 7-130G	6" CASTER, BLACK 6" CASTER, GREY		1
14	4-135	L.F. PANEL GUSSET		1
15	4-141	HDPE HOPPER SLIDE		2
16	4-142	ROLLER		2
17	4-143	ROLLER BRACKET		2
18	4-384	ATTENUATOR		1
19	4-421	SUPPORT BLOCK		1
20	4-441	BROOM MOUNTING BLOCK		1
21	4-514	HOPPER FLOOR SEAL	P/N 4-550 INCLUDES: ITEMS 21,22,23,24, & 25	1
22	4-515	RIGHT FLOOR SEAL		1
23	4-516	REAR FLOOR SEAL		1
24	4-517	CORNER FLOOR SEAL		1
25	4-518	BROOM FLOOR SEAL		1
26	4-525	HOPPER SEAL STRIP		1
27	4-526	RH SEAL STRIP		1
28	4-527	REAR SEAL STRIP		1
29	4-528	CORNER SEAL STRIP		1
30	4-529	CURTAIN CLAMP		1
31	5-130	SIDE DOOR LATCH		1
32	H-10436-0105	3/8" X 1 1/4" SPRING PIN		1
33	H-11213	HCS 1/2"-13 X 2 1/2"		2
34	H-13003	HCS 1/4"-20 X 3/4"		2
35	H-13055	HCS 5/16"-18 X 1"		4
36	H-19901	FB CASHD 1/4"-20 X 1/2"		29
37	H-250HCN	HCN 1/4"-20		50
38	H-29055	RPH #10-32 X 5/8"		28
39	H-29570	FHP 1/4"-20 X 1"		2
40	H-29576	FHP 1/4"-20 X 1 3/4"		4
41	H-33012	FW 1/2" SS		2
42	H-33078	FW 1/4" SAE		2
43	H-33080	FW 5/16" SAE		4
44	H-70712	HN 3/8"-16 SS		8
45	H-36102	HN 1/4"-20		8
46	H-36104	HN 5/16"-18		4
47	H-37015	NYLOK #10-32		35
48	H-37018	NYLOK 1/4"-20		8
49	H-37030	NYLOK 1/2"-13		2
50	H-70001	HCS 1/4"-20 X 1/2 SS"		21
51	H-70103	HCS 3/8"-16 X 3/4" SS		8
52	H-33620	LW 5/16"		4
53	H-71063	LW 1/4" SS		23
54	H-71067	LW 3/8" SS		8
55	H-71671	HXMS #10-32 X 1/2" SS		10

# Side Broom Assy



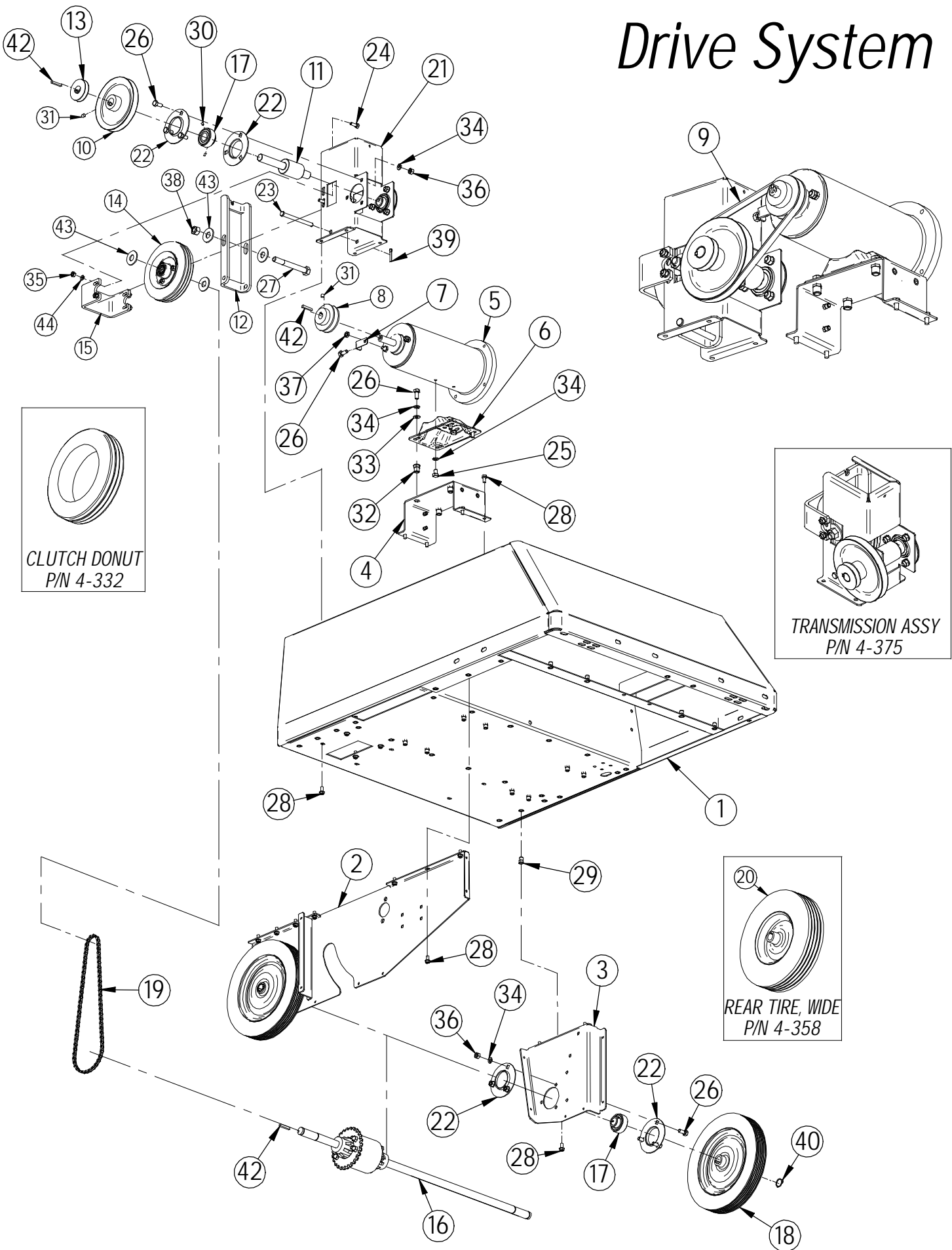
Item	Part No.	Description	Comments	Qty
1	4-111	MAIN BODY		1
2	4-113	R. INNER SIDE PANEL		1
3	4-220	SIDE BROOM MOTOR	P/N 4-425 INCL. ITEMS 3,15,16,17,18 & HARDWARE	1
4	4-376	BROOM LIFT LEVER	P/N 4-455 INCL. ITEMS 4,5,6,7,8,19 & HARDWARE	1
5	4-378	BROOM LIFT SHAFT		1
6	4-381	LIFT LEVER BASE, RT		1
7	4-385	LIFT LEVER COLLAR		1
8	4-386	LIFT LEVER SPRING		1
9	4-402	SIDE BROOM POLYPROPYLENE	P/N 4-402 INCLUDES P/N 4-404	1
10	4-404	SIDE BROOM CLUTCH PLATE	P/N 4-402 INCLUDES P/N 4-404	1
11	4-436	ADJ. BROOM LIFT		1
12	4-441	BROOM MOUNTING BLOCK		1
13	4-442	SIDE BROOM ARM		1
14	4-443	BROOM RETAINING PLATE		1
15	4-444	BROOM SAFETY DRIVE CPLG		1
16	4-445A	BROOM MOTOR MOUNT	P/N 4-445 INCL. ITEMS 15,16,17,18 & HARDWARE	1
17	4-445B	BROOM SHAFT		1
18	4-445C	DRIVE TUBE BEARING		2
19	4-446	GROMMET-3/8 ID X 1-1/2 OD X .375		2
20	4-448	HANDLE GRIP		1
21	4-456	SIDE BROOM LONG LINK		1
22	4-457	ADJUSTMENT KNOB		1
23	4-515	RIGHT FLOOR SEAL		1
24	4-526	RH SEAL STRIP		1
25	H-10436-0010	1/4" X 1 1/4" SPRING PIN		1
26	H-10436-0105	3/8" X 1 1/4" SPRING PIN		1
27	H-19901	FB CASHD 1/4"-20 X 1/2"		7
28	H-2250- 218	1/2" X 1" CLEVIS PIN		1
29	H-250HCN	HCN 1/4"-20		50
30	H-25328	SSS CP 1/4"-20 X 3/8"		2
31	H-29055	RPH #10-32 X 5/8"		4
32	H-29576	FHP 1/4"-20 X 1 3/4"		4
33	H-36104	HN 5/16"-18		1
34	H-37015	NYLOK #10-32		4
35	H-37018	NYLOK 1/4"-20		8
36	H-37021	NYLOK 5/16"-18		2
37	H-38558	HCS M6-1.0 X 14		3
38	H-45285	HITCH PIN CLIP 9		2
39	H-50102	FW 5/8 X 1 5/16"		1
40	H-70001	HCS 1/4"-20 X 1/2 SS"		2
41	H-71063	LW 1/4" SS		5
42	H-72916	PPH SMS #8 X 3/4" SS		3
43	H-HAIR4	#4 HAIR PIN		1
44	H-ZCP154	3/8" X 1 1/2" CLEVIS PIN		1
45	H-ZCP44	1/4" X 1 1/2" CLEVIS PIN		1

# Main Broom Assy



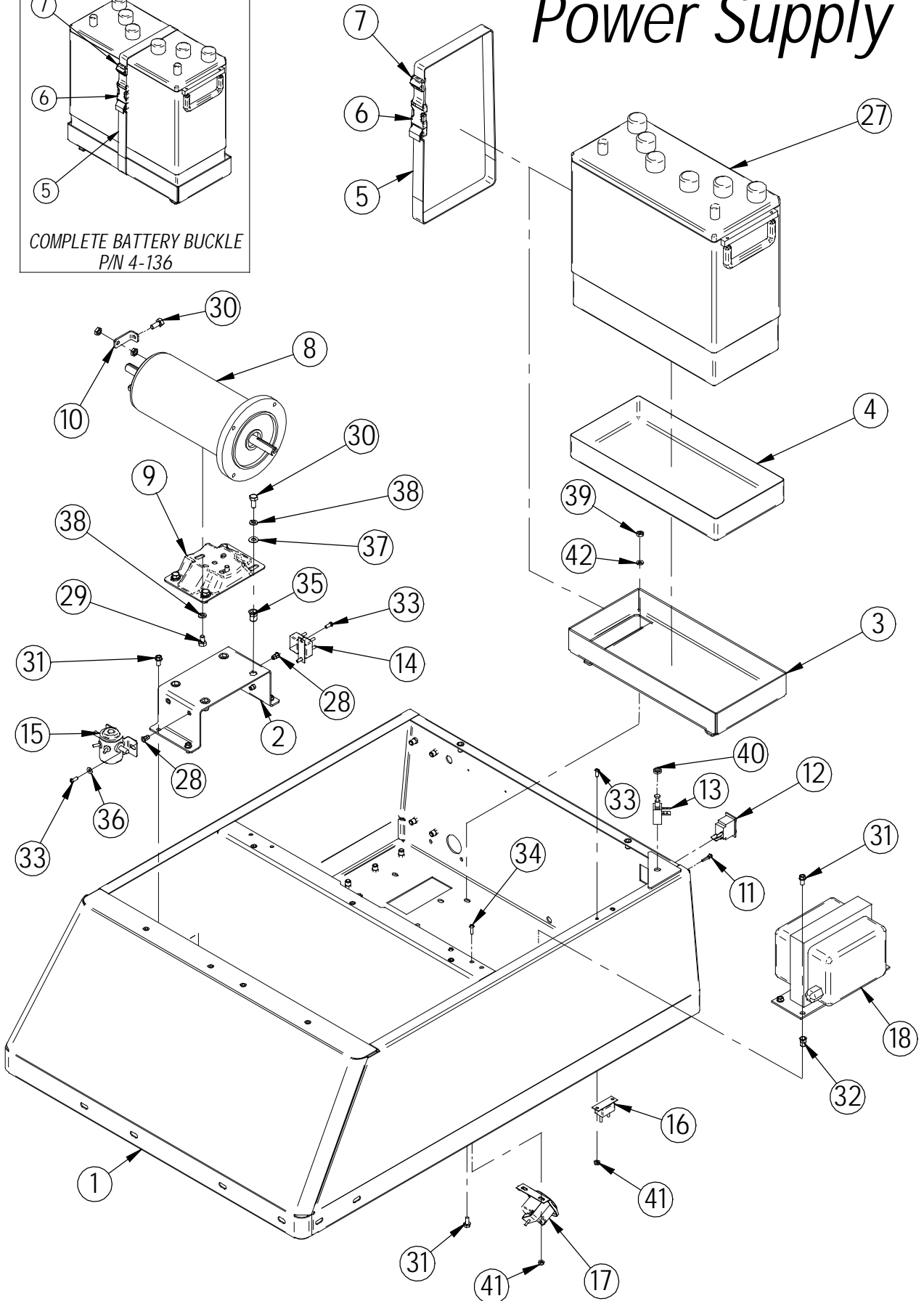
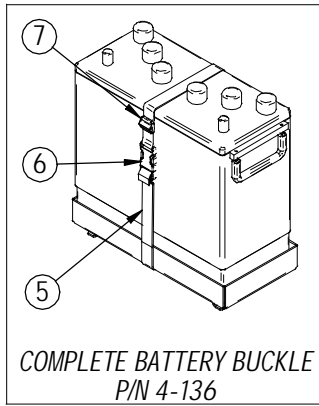
Item	Part No.	Description	Comments	Qty
1	4-111	MAIN BODY		1
2	4-113	R. INNER SIDE PANEL		1
3	4-302	BELT, 3V X 475		1
4	4-316	BROOM DRIVE PULLEY		1
5	4-317	IDLER PULLEY		1
6	4-318	IDLER PULLEY		1
7	4-319	TENSION SPRING		1
8	4-360	REVERSE IDLER ARM		1
9	4-366	BUSHING, IDLER ARM		1
10	4-376	BROOM LIFT LEVER		1
11	4-377	BROOM LIFT SHAFT		1
12	4-380	LIFT LEVER BASE, LT		1
13	4-382	ROTARY LINK BASE		1
14	4-385	LIFT LEVER COLLAR		1
15	4-386	LIFT LEVER SPRING		1
16	4-401US	MAIN BROOM		1
17	4-410	BROOM SUSP. ARM		1
18	4-410A	SET COLLAR		1
19	4-412	BROOM DRIVE BEARING	P/N 4-415 INCL. P/N 4-412 & P/N 4-416	1
20	4-416	BROOM LATERAL ARM	P/N 4-415 INCL. P/N 4-412 & P/N 4-416	1
21	4-420	BROOM DRIVER	INCLUDES: KEY, SET SCREWS, AND ROLL PINS	1
22	4-421	SUPPORT BLOCK		1
23	4-4230	3/4" X 1" X 1/2" FLG BEARING	P/N 4-423 INCL. P/N 4-423B-L, 4-423B-R & 4-4230	1
24	4-423B-L	SUPPORT BRACKET TABS	P/N 4-423 INCL. P/N 4-423B-L, 4-423B-R & 4-4230	1
25	4-423B-R	SUPPORT BRACKET TABS	P/N 4-423 INCL. P/N 4-423B-L, 4-423B-R & 4-4230	1
26	4-430	IDLER ARM	P/N 4-435 INCL. 4-430, 4-432, 4-432A, & HARDWARE	1
27	4-432	IDLER DRUM	P/N 4-435 INCL. 4-430, 4-432, 4-432A, & HARDWARE	1
28	4-432A	IDLER DRUM SPACER	P/N 4-435 INCL. 4-430, 4-432, 4-432A, & HARDWARE	1
29	4-436	ADJ. BROOM LIFT	P/N 4-449 INCL. ITEMS: 10,11,12,14,15,33,34,39,51,52 & HDWE	1
30	4-437	BROOM LONG LINK		1
31	4-438	BROOM ROTARY LINK		1
32	4-439	BROOM CRANK LINK		1
33	4-448	HANDLE GRIP		1
34	H-10436-0010	1/4" X 1 1/4" SPRING PIN		1
35	H-10436-0105	3/8" X 1 1/4" SPRING PIN		2
36	H-13103	HCS 3/8"-16 X 3/4"		2
37	H-13213	HB 1/2" X 2 1/2"		1
38	H-19901	FB CASHD 1/4"-20 X 1/2"		12
39	H-2250- 218	1/2" X 1" CLEVIS PIN		1
40	H-250HCN	HCN 1/4"-20		50
41	H-25283	SSS CP #10-32 X 1"		1
42	H-25328	SSS CP 1/4"-20 X 3/8"		3
43	H-25435	SSS CP 5/16" X 1/4"		1
44	H-26316	SB 5/16" X 3/4" SS		1
45	H-29570	FHP 1/4"-20 X 1"		2
46	H-33008	FW 3/8" SAE		4
47	H-33622	LW 3/8"		3
48	H-36106	HN 3/8"-16		1
49	H-37018	NYLOK 1/4"-20		2
50	H-37030	NYLOK 1/2"-13		1
51	H-45285	HITCH PIN CLIP 9		2
52	H-50102	FW 5/8 X 1 5/16"		1
53	H-65035	3/32" X 7/8" COTTER PIN		3
54	H-70001	HCS 1/4"-20 X 1/2 SS"		2
55	H-71063	LW 1/4" SS		2
56	H-K1432	3/16" X 1/2" KEY		1
57	H-ZCP154	3/8" X 1 1/2" CLEVIS PIN		1

# Drive System



Item	Part No.	Description	Comments	Qty
1	4-111	MAIN BODY		1
2	4-113	R. INNER SIDE PANEL		1
3	4-120	REAR INNER PANEL, LT		1
4	4-125	MOTOR SUPT BRACKET		1
5	4-201	12V,TWIN SHAFT MOTOR		1
6	4-201B	MOTOR CRADLE		1
7	4-210	TERMINAL CLIP		1
8	4-301	MAIN DRIVE PULLEY		1
9	4-311	BELT, 4L260		1
10	4-312	TRANS INPUT PULLEY	P/N 4-375 INCL. COMPLETE TRANSMISSION ASSY	1
11	4-313	REAR WHEEL CAPSTAN		1
12	4-314	CLUTCH MTG BRACKET		1
13	4-320	BROOM DRIVE PULLEY		1
14	4-330	CLUTCH WHEEL ASSY	CLUTCH DONUT ORDERED SEPARATE IS P/N 4-332	1
15	4-340	BRAKE SHOE		1
16	4-350	DIFFERENTIAL AXLE		1
17	4-352	BEARING		4
18	4-353	REAR TIRE, STANDARD		2
19	4-354	DRIVE CHAIN W/ MASTER LINK		1
20	4-358	REAR TIRE, WIDE	(OPTIONAL)	2
21	4-362	TRANS. HOUSING		1
22	4-364A	FLANGE, 1.75" ID	P/N 4-364 INCLUDES SET OF 2	8
23	H-10436- 00135	3/8" X 4 1/2" CLEVIS PIN		1
24	H-13003	HCS 1/4"-20 X 3/4"		4
25	H-13051	HCS 5/16"- 18 X 1/2"		2
26	H-13053	HCS 5/16"-18 X 3/4"		16
27	H-15220	HB 1/2"-13 X 4 1/4"		1
28	H-19901	FB CASHD 1/4"-20 X 1/2"		18
29	H-250HCN	HCN 1/4"-20		50
30	H-25153	SSS CP #8-32 X 1/4 "		4
31	H-25435	SSS CP 5/16" X 1/4"		2
32	H-312HCN	HCN 5/16"-18		4
33	H-33080	FW 5/16" SAE		4
34	H-33620	LW 5/16"		16
35	H-36102	HN 1/4"-20		4
36	H-36104	HN 5/16"-18		12
37	H-36204	JN 5/16"- 18		4
38	H-37030	NYLOK 1/2"-13		1
39	H-65076	1/8" X 1" COTTER PIN		1
40	H-68015	SNAPRING 3/4"		2
41	H-71063	LW 1/4" SS		4
42	H-K14320	3/16" X 1 1/4" KEY		5
43	P50352	FW 17/32"		4

# Power Supply



Item	Part No.	Description	Comments	Qty
1	4-111	MAIN BODY		1
2	4-125	MOTOR SUPT BRACKET		1
3	4-128	BATTERY TRAY		1
4	4-128A	BATTERY TRAY LINER		1
5	4-136A	1" HD BLACK WEBBING	P/N 4-136 INCL. 4-136A, 4-137, & 4-137A	1
6	4-137	BATTERY BUCKLE	P/N 4-136 INCL. 4-136A, 4-137, & 4-137A	1
7	4-137A	TRIGLIDE	P/N 4-136 INCL. 4-136A, 4-137, & 4-137A	1
8	4-201	12V,TWIN SHAFT MOTOR		1
9	4-201B	MOTOR CRADLE		1
10	4-210	TERMINAL CLIP		1
11	4-227	LOW BATTERY LIGHT		1
12	4-229	3 POS ROCKER SWITCH		1
13	4-231	SAFETY SHUT OFF SWITCH		1
14	4-232	CIR. BREAKER - 12V/80A		1
15	4-233	12V SOLENOID		1
16	4-235	CIR. BREAKER - 12V/6A		1
17	4-240	HOUR METER		1
18	4-244	BATTERY CHARGER		1
19	4-251	SUB-LEAD, BATTERY TO GREY 50 CONN.	NOT SHOWN	1
20	4-251N	SUB-LEAD, BATTERY TO GREY 50 CONN.	NOT SHOWN	1
21	4-252	SUB-HARNESS, GREY 50 TO 80 AMP BREAKER	NOT SHOWN	1
22	4-253	SUB-HARNESS, 80 AMP BREAKER TO SOLENOID	NOT SHOWN	1
23	4-254	SUB-LEAD, SOLENOID TO MAIN MOTOR	NOT SHOWN	1
24	4-255	SUB-HARNESS, MAIN WIRING HARNESS	NOT SHOWN	1
25	4-256	GREY 50 CONNECTOR WITH CONTACTS	NOT SHOWN	2
26	4-260	GREY 50 CONNECTOR, HOUSING ONLY	NOT SHOWN	2
27	4-270	BATTERY, 12 VOLT-135 AH		1
28	H-1032HCN	HCN #10-32		11
29	H-13051	HCS 5/16" - 18 X 1/2"		2
30	H-13053	HCS 5/16" -18 X 3/4"		5
31	H-19901	FB CASHD 1/4"-20 X 1/2"		12
32	H-250HCN	HCN 1/4"-20		50
33	H-29048	RPH #10-32 X 1/2"		6
34	H-29055	RPH #10-32 X 5/8"		2
35	H-312HCN	HCN 5/16"-18		4
36	H-33074	FW #10 SAE		2
37	H-33080	FW 5/16" SAE		4
38	H-33620	LW 5/16"		6
39	H-36102	HN 1/4"-20		4
40	H-36106	HN 3/8"-16		1
41	H-37015	NYLOK #10-32		4
42	H-71063	LW 1/4" SS		4

# SWEEPER MAINTENANCE RECORDS

**Operator's Name:** \_\_\_\_\_

**Week Of:** \_\_\_\_\_

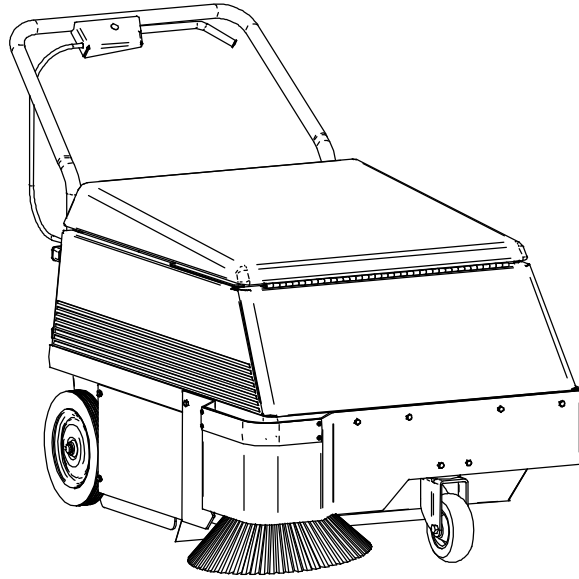
<b>Maintenance Item</b>	<b>Monday</b>	<b>Tuesday</b>	<b>Wednesday</b>	<b>Thursday</b>	<b>Friday</b>
<b>Daily</b>					
Park Machine with Brooms Up					
Shake Filter with Crank					
Remove and Empty Hopper					
Open Hood					
Plug In Charger to 110V Outlet					
Clean Machine with "Pledge" and Cloth					
Check Main Broom for Debris					
<b>Weekly</b>					
Check Battery Water Level					
Inspect Floor Seals					
Check Clutch Adjustment					
Inspect Main and Side Brooms					
<b>Monthly</b>					
Lubricate the Front Caster					
Remove Main Broom and Inspect					
Check Wiring Connections					
Inspect Battery Terminals					
Shake Filter with Crank for 1 minute					
<b>Annual</b>					
Install "Wear Pack"					
Inspect the Belt Tension Spring					

**Supervisor:** \_\_\_\_\_

Call 1 (800) 634-4060 for assistance



# STANDARD WARRANTY POLICY



## Eighteen (18) Months Coverage

**PARTS:** Replacement parts will be supplied free for **18 months or 750 hours** from date of delivery to customer. This parts warranty includes all parts on the machine except normal wear parts. These exceptions are:

1. The brooms (main and side).
2. The neoprene floor and hopper seals.
3. The filter-cleaning crank's safety pin (which is a fail-safe device).
4. The side-broom fuse (on units so equipped).
5. The two rubber drive belts.

**LABOR: 3 Months** from date of delivery to customer.

**TRAVEL: 1 Month** from date of delivery to customer.

Abuse and deliberate misuse are not covered. Warranty is granted at the entire option of manufacturer.



RPS-A13-Rev1298

